

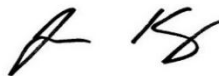
DESIGNATED SUBSTANCES AND HAZARDOUS MATERIALS REASSESSMENT REPORT



**Eva Phoenix Transitional Housing
60 Brant Street
Toronto, Ontario
M5V 3G9**

Performed for:
Inder Bhamra (he/him/his), EP, PMP, CSM
Project Manager - Project Management Office
City of Toronto - Corporate Real Estate Management

Performed by:
Safetech Environmental Limited

A handwritten signature in black ink, appearing to read "A K".

Jason King
Occupational Health and Safety Technician

Reviewed by:

A handwritten signature in black ink, appearing to read "J Mazzulli".

John Mazzulli, B.A.
Project Coordinator

Date of Issue: November 19, 2025
Safetech Project # 1-3250872

EXECUTIVE SUMMARY

Safetech Environmental Limited (Safetech) was commissioned by the City of Toronto – Corporate Real Estate Management to conduct a reassessment for designated substances and hazardous materials for the Eva Phoenix Transitional Housing located at 60 Brant Street, Toronto, Ontario.

The objective of the assessment was to determine the presence, location, condition and quantities of previously identified designated substances and other hazardous materials and, if necessary, provide recommendations based on findings to assist the City of Toronto to achieve regulatory compliance.

A summary of the assessment results and our findings are provided in the following table. This table should be considered a summary only. Complete commentary on each of the designated substances can be found in the body of this report. The executive summary is not intended to substitute for the complete report, nor does it discuss certain specific issues documented in the report. Please refer to the Results, Recommendations and Appendices of our report for additional details.

Table 1: Summary of Hazardous Materials and Designated Substances

Designated Substance	Findings
Asbestos	No asbestos-containing materials were identified in designated areas outlined during this reassessment. The following building materials are suspected to be asbestos-containing: - dark blue vinyl sheet flooring; - mastic associated with flooring - exterior window caulking; and - roofing materials
Lead	The following materials are assumed to be lead-containing: - paints and surface coatings (not sampled); and - glazing associated with ceramic tiles; - solder in copper pipe fittings; and - solder in electrical components.
Mercury	No sources of mercury were observed in the subject area.
Silica	Building materials identified that are suspected to contain crystalline silica include: - concrete; - masonry building materials; and - drywall.
Other Designated Substances	No other designated substances are expected to be present in any significant quantities or in a form that would represent an exposure concern.
Other Hazardous Materials	Findings
Urea Formaldehyde Foam Insulation	No UFFI was identified or is suspected in the subject area.
Mould Contamination	No suspect mould contamination was observed on building finishes in the subject area.
Pest Infestation	No pest infestations were observed in the areas assessed.

Polychlorinated Biphenyls	No equipment was identified to contain PCBs.
Ozone Depleting and Global Warming Substances	No equipment was observed that is suspected to contain ozone depleting and/or global warming substances

This assessment satisfies the Owner's requirements under Section 30 of the Ontario Occupational Health and Safety Act (OHSA), Revised Statutes of Ontario 1990, as amended.

Should you have any questions regarding the information contained in the report, please contact our office.

Table of Contents

1.0	INTRODUCTION	1
1.1	Scope of Work	2
2.0	METHODOLOGY	2
3.0	ASSESSMENT OF DESIGNATED SUBSTANCES	5
3.1	Asbestos Containing Materials	5
3.1.1	Results	5
3.1.2	Recommendations	6
3.2	Lead Containing Materials.....	6
3.2.1	Results.....	6
3.2.2	Recommendations	6
3.3	Mercury Containing Materials.....	7
3.3.1	Results.....	7
3.3.2	Recommendations	7
3.4	Silica Containing Materials.....	7
3.4.1	Results.....	7
3.4.2	Recommendations	7
3.5	Acrylonitrile	8
3.5.1	Results.....	5
3.5.2	Recommendations	5
3.6	Arsenic	8
3.6.1	Results.....	5
3.6.2	Recommendations	5
3.7	Benzene.....	8
3.7.1	Results.....	5
3.7.2	Recommendations	5
3.8	Coke Oven Emissions	9
3.5.1	Results.....	9
3.5.2	Recommendations	9
3.9	Ethylene Oxide	9
3.9.1	Results.....	9
3.9.2	Recommendations	9
3.10	Isocyanates	9
3.10.1	Results.....	9
3.10.2	Recommendations	9

3.11 Vinyl Chloride	9
3.11.1 Results	9
3.11.2 Recommendations	9
3.12 Mould Contaminated Materials.....	9
3.12.1 Results.....	9
3.12.2 Recommendations	10
3.13 Polychlorinated Biphenyls (PCBs)	10
3.13.1 Results.....	10
3.13.2 Recommendations	10
3.14 Ozone Depleting and Global Warming Substances	10
3.14.1 Results.....	10
3.14.2 Recommendations	10
4.0 CORRECTIVE ACTIONS.....	10
5.0 LIMITATIONS	10
Appendix I - Hazardous Materials Room by Room Inventory Sheet	12
Appendix II – Results of Bulk Sample Analysis.....	13
Appendix III – Site Drawings	14
Appendix IV – Site Photographs.....	15
Appendix V – Corrective Actions Inspection Report	16

November 17, 2025

City of Toronto – Corporate Real Estate Management
55 John Street Toronto, Ontario
M5V 3C6

Attention: Inder Bhamra (he/him/his), EP, PMP, CSM
Project Manager - Project Management Office

RE: Designated Substances and Hazardous Materials Reassessment
Eva Phoenix Transitional Housing
60 Brant Street, Toronto, Ontario

1.0 INTRODUCTION

Safetech Environmental Limited (Safetech) was contracted by the City of Toronto – Corporate Real Estate Management Office to conduct a designated substances and hazardous materials reassessment survey for Eva Phoenix Transitional Housing located at 60 Brant Street, Toronto, Ontario. The site investigation was conducted on October 17, 2025.

The objective of this study was to determine the extent and condition of previously identified designated substances and other hazardous materials within the subject building as required annually by the City of Toronto – Corporate Real Estate Management and Ontario Regulation 278/05 (O.Reg. 278/05), “Designated Substance - Asbestos on Construction Projects and in Buildings and Repair Operations”. The survey also included an evaluation of the degree of possible exposure and assessing requirements for any further investigation or remedial action, if necessary.

The survey included a review and inspection of individual rooms in order to determine the presence and extent of detected designated substances and hazardous materials that have not been previously abated. The survey addressed only accessible areas of the facility. No destructive testing was performed. An assessment of the following designated substances and hazardous materials was conducted if previously identified:

- Asbestos;
- Lead;
- Mercury;
- Silica;
- Mould;
- Polychlorinated Biphenyls;
- Ozone Depleting and Global Warming Substances

This survey satisfies requirements of Ontario Regulation 278/05 *Designated Substance - Asbestos on Construction Projects and in Buildings and Repair Operations* as made under the Occupational Health and Safety Act.

1.1 Scope of Work

In accordance with our fee proposal document, our scope of work included the following activities:

- A review of existing documents, including drawings, floor plans and existing environmental assessment reports, etc., where available;
- A visual assessment of accessible area(s) in the subject building to identify the presence, location, condition and quantities of previously identified designated substances and other hazardous materials;
- Interpretation of bulk sample analysis where applicable (if required) for the determination of content and material classification;
- Preparation of a reassessment survey report to document findings and provide recommendations where applicable.

Documents reviewed to aid in the assessment included the following:

- Annual Reassessment Report, Eva Phoenix Transitional Housing, 60 Brant Street, Toronto, Ontario, by Safetech Environmental, Project: 1-3240437, Dated August 2, 2024.

2.0 METHODOLOGY

The scope of the reassessment was limited to accessible areas identified to contain designated substances and hazardous materials as per the City of Toronto Annual DSS Reassessment Report Database. Documents within the existing database were provided by the City of Toronto - Corporate Real Estate Management Office and utilized for this reassessment.

Destructive testing was not performed during this investigation. Locations of identified designated substances and hazardous materials have been detailed in this report where access was readily available. Inaccessible areas such as above solid drywall/plaster ceilings, within walls, enclosed mechanical shafts, enclosed bulkheads and pipe chases were not investigated. However, details regarding the possible presence of suspect materials were provided on a case-by-case basis.

Asbestos-Containing Materials

Safetech relied on existing asbestos survey information for review. Building materials that were visually similar to materials previously tested and that were confirmed to be either ACM or non-ACM were considered to have consistent content and were not re-

sampled. Additional sampling was only conducted where the investigator believed a need existed. Disturbance of asbestos-containing materials must be conducted in accordance with Ontario Regulation 278/05 *Designated Substance – Asbestos on Construction Projects and in Building and Repair Operations*.

Lead-Containing Materials

Paint samples, if collected, are submitted to an independent laboratory for the determination of lead content. The laboratory is accredited by the U.S. Environmental Protection Agency (EPA) for analysis of lead in paint chips through the American Industrial Hygiene Association (AIHA) Environmental Lead Laboratory Accreditation Program (ELLAP). Analysis conducted following the EPA “Test Methods for Evaluating Solid Waste, Physical/Chemical Methods” (SW-846), Method 7000B “Flame Atomic Absorption Spectrophotometry”. Result of analysis reported by the laboratory as the percentage of lead by weight of the total sample (% by wt.).

The presence of lead in other materials, such as lead sheeting, pigmented mortar, lead piping, lead solder, etc. would be noted where observed but not sampled to verify lead content. Lead can be present in these materials to varying degrees, depending on their age of application and should be considered lead-containing until proven otherwise.

Mercury Containing Materials

The type, quantity and location of mercury-containing equipment and devices in the subject area were determined by visual inspection based on appearance, age and knowledge of historical uses. Sampling for mercury-containing building materials and dismantling of suspect mercury-containing equipment was not performed. Where possible, attempts were made to verify the presence/absence of mercury by gathering additional information such as equipment model number, serial number, etc.

Silica Containing Materials

The presence of crystalline silica in building materials was determined through visual inspection of building materials only, based on knowledge of the historic use of silica-containing materials in certain building materials. Sampling to verify the presence/absence of silica in building materials was not performed.

Acrylonitrile

Acrylonitrile is typically not expected to be encountered in building materials as a significant constituent or in a form that would represent an exposure concern. Acrylonitrile was not included in the assessment unless specific information regarding its use (e.g. in a manufacturing process) was provided to us. No sampling for acrylonitrile was performed.

Arsenic

Arsenic is typically not expected to be encountered in building materials as a significant constituent or in a form that would represent an exposure concern. Arsenic was not included in the assessment unless specific information regarding its use (e.g. in a manufacturing process) was provided to us. No sampling for arsenic was performed.

Benzene

Benzene is typically not expected to be encountered in building materials as a significant constituent or in a form that would represent an exposure concern. Benzene was not included in the assessment unless specific information regarding its use (e.g. in a manufacturing process) was provided to us. No sampling for benzene was performed.

Coke Oven Emissions

Coke Oven Emissions are typically not expected to be encountered in building materials as a significant constituent or in a form that would represent an exposure concern. Coke Oven Emissions were not included in the assessment unless specific information regarding their use (e.g., in a manufacturing process) was provided to us. No sampling for coke oven emissions was performed.

Ethylene Oxide

Ethylene Oxide is typically not expected to be encountered in building materials as a significant constituent or in a form that would represent an exposure concern. Ethylene Oxide was not included in the assessment unless specific information regarding its use (e.g. in a manufacturing process) was provided to us. No sampling for ethylene oxide was performed.

Isocyanates

Isocyanates are typically not expected to be encountered in building materials as a significant constituent or in a form that would represent an exposure concern. Isocyanates were not included in the assessment unless specific information regarding their use (e.g. in a manufacturing process) was provided to us. No sampling for isocyanates were performed.

Vinyl Chloride

Vinyl Chloride is typically not expected to be encountered in building materials as a significant constituent or in a form that would represent an exposure concern. Vinyl Chloride was not included in the assessment unless specific information regarding its use (e.g. in a manufacturing process) was provided to us. No sampling for vinyl chloride was performed.

Mould Contaminated Materials

A visual inspection to determine the possibility of mould growth was conducted in the subject area. The assessment was limited to identifying evidence of mould growth and water damage (staining, material deterioration, efflorescence, etc.) on the surface of

building materials, which may be an indicator of hidden mould growth. No moisture content readings of building materials were taken to determine their current condition. Additionally, destructive testing to confirm the presence/absence of hidden mould growth and material sampling to verify the presence/absence of mould on suspect surfaces was beyond the scope of this assessment.

Polychlorinated Biphenyls (PCB's)

The presence of PCB-containing electrical equipment in the subject area was identified through visual inspection and knowledge of the timeline of historical use. For stand-alone transformers and capacitors, information from the manufacturer nameplate (such as the date of manufacture, dielectric fluid trade name or "Type Number", etc.) was gathered, where possible, to further evaluate if the equipment may contain PCBs. This information was then compared to the information provided in the Environment Canada document entitled "Handbook on PCB's in Electrical Equipment" (Third Edition, April 1988) to aid in identification. Transformers and capacitors confirmed to be manufactured after 1979 were assumed to not contain PCBs. If appropriate information could not be obtained it was assumed that the transformer or capacitor contained PCBs.

Ozone Depleting and Global Warming Substances

The presence of fixed equipment likely to contain ozone-depleting substances (ODS) and/or global-warming substances (GWS) was identified through visual inspection and knowledge of the timeline of historical use. This included equipment such as chillers, air-conditioners, walk-in refrigeration and freezer units and fixed dry-chemical fire extinguishers, where chemicals such as hydrochlorofluorocarbons (HCFCs), hydrofluorocarbons (HFCs) or halons may be present. Where possible, information regarding the type and quantity of refrigerant present was obtained from the manufacturer nameplate.

3.0 ASSESSMENT OF DESIGNATED SUBSTANCES

3.1 Previous Laboratory Analytical Results

All previously assumed and/or confirmed asbestos containing materials were observed to be in good condition at the time of this assessment.

The following building materials are ***suspected to be asbestos-containing*** but were not sampled as sampling would compromise the integrity of the material, lack of accessibility or potential hazards to the surveyor:

- dark blue vinyl sheet flooring;
- mastic associated with flooring;
- exterior window caulking; and
- roofing materials.

Refer to Appendix I - Hazardous Materials Room by Room Inventory Sheet and Appendix III – Site Drawing for types, locations, estimated quantities, and condition of asbestos-containing materials identified.

No additional samples were collected for analysis during this assessment.

3.1.2 Recommendations

Removal or disturbance of identified asbestos-containing materials must be conducted in accordance with O.Reg. 278/05. Asbestos containing materials in Poor condition must be removed and/or repaired immediately following applicable asbestos abatement procedures. Asbestos-containing materials in Good condition can remain in place until major system upgrading, maintenance or demolition which could result in disturbance of this material.

3.2 Lead Containing Materials

3.2.1 Results

Building materials previously identified as suspected lead-containing were observed to be in good condition. No samples were collected for analysis during this assessment.

Suspect lead-containing materials which may be present in the subject building include the following:

- paints and surface coatings (not sampled);
- glazing associated with ceramic tiles;
- solder in copper pipe fittings; and
- solder in electrical components.

Refer to Appendix I - Hazardous Materials Room by Room Inventory Sheet for types, locations, estimated quantities, and condition of lead-containing materials previously identified in the subject area.

3.2.2 Recommendations

Paints and surface coatings not sampled are assumed to be lead-containing (>0.1% lead content) in the subject area. Any disturbance of the lead-containing paints or surface coatings should be conducted in accordance with the procedures outlined in the Environmental Abatement Council of Canada (EACC) “Lead Guideline” (October 2014) and/or the Ontario Ministry of Labour, Immigration, Training and Skills Development (MLITSD) “Lead on Construction Projects” guideline (April 2011). The extent of procedures required depends on the type of work to be conducted.

It is recommended that any contractor whose work requires lead-containing materials to be disturbed consult the Ontario MLITSD guidelines prior to the start of work to determine the Type of operation(s) and the corresponding control measures (engineering controls, work/hygiene practices, protective clothing and equipment and worker training) necessary to conduct the work in a manner that will prevent worker overexposure to lead.

3.3 Mercury Containing Materials

3.3.1 Results

Mercury liquid is suspected to be present in thermometers, barometers and other measuring devices (pressure gauges/sensors, vacuum gauges, manometers, etc.), thermostats and a variety of other electrical switches (temperature sensitive, tilt switches, float switches, etc.) associated with mechanical equipment.

Mercury vapour is suspected to be present in the subject building within fluorescent lamps.

3.3.2 Recommendations

It is cautioned that thermometers, barometers and other measuring devices (pressure gauges/sensors, vacuum gauges, manometers, etc.), thermostats and a variety of other electrical switches (temperature sensitive, tilt switches, float switches, etc.) may contain mercury that may not be visible without dismantling the equipment. Such devices should be assumed to contain mercury until proven otherwise and similar precautions to those outlined above should be taken if any of these items are to be disturbed or taken out of service in the future.

Fluorescent lamps that require removal should be handled with care and kept intact to avoid potential exposure to mercury vapour present within the lamps. Under Reg. 347, waste mercury produced in amounts less than 5 kilograms (kg) in any month or otherwise accumulated in an amount less than 5 kg are exempt from hazardous waste registration, treatment and disposal requirements and can be disposed of in landfill as regular waste. Larger quantities of waste mercury must be treated and disposed of in accordance with the requirements of Reg. 347. To prevent the release of mercury into the environment, Safetech recommends that all waste lamps be sent to a lamp recycling facility and not disposed of in landfill.

3.4 Silica Containing Materials

3.4.1 Results

Suspect silica-containing materials were previously identified to be present in the form of: concrete and masonry building materials.

3.4.2 Recommendations

Suspect silica-containing materials were identified to be present in the subject building. In their current state, building materials containing silica do not represent a risk to building occupants or construction workers. Risks associated with exposure to silica arise during demolition activities that cause silica dust to be created (particularly grinding, drilling or cutting operations and during major demolition), resulting in a crystalline silica inhalation hazard.

If any materials suspected to contain silica are to be removed or otherwise disturbed as a result of renovation/demolition activities it is recommended that procedures be put in place to control the generation of dust (such as routine water misting) and thus reduce the

potential for worker exposure. Workers that have the potential to be exposed to airborne silica should also wear appropriate protective clothing and respiratory protection.

Any work involving the disturbance of silica-containing materials should follow the procedures outlined in the Ontario MLITSD “Silica on Construction Projects” guideline (April 2011). The appropriate engineering controls, work practices, hygiene practices, personal protective measures and training necessary to conduct the work in a safe manner are provided in this guideline. The general measures and procedures (or Type of operation) necessary depends on the type of work to be conducted.

3.5 Acrylonitrile

3.5.1 Results

Building materials which may contain acrylonitrile were not previously identified within the subject building.

3.5.2 Recommendations

There are no recommendations with regard to acrylonitrile.

3.6 Arsenic

3.6.1 Results

Building materials which may contain arsenic were not previously identified within the subject building.

3.6.2 Recommendations

No protective measures or procedures specific to arsenic are considered necessary.

3.7 Benzene

3.7.1 Results

Building materials which may contain benzene not previously identified within the subject building.

3.7.2 Recommendations

No protective measures or procedures specific to benzene are considered necessary.

3.8 Coke Oven Emissions

3.8.1 Results

Building materials which may contain coke oven emissions were not previously identified within the subject building.

3.8.2 Recommendations

No protective measures or procedures specific to coke oven emissions are considered necessary.

3.9 Ethylene Oxide

3.9.1 Results

Building materials which may contain ethylene oxide were not previously identified within the subject building.

3.9.2 Recommendations

No protective measures or procedures specific to ethylene oxide are considered necessary.

3.10 Isocyanates

3.10.1 Results

Building materials which may contain isocyanates were not previously identified within the subject building.

3.10.2 Recommendations

No protective measures or procedures specific to isocyanates are considered necessary.

3.11 Vinyl Chloride

3.11.1 Results

Building materials which may contain vinyl chloride were not previously identified within the subject building.

3.11.2 Recommendations

No protective measures or procedures specific to vinyl chloride are considered necessary.

3.12 Mould Contaminated Materials

3.12.1 Results

No mould contamination and/or water damage was observed in the surveyed area.

3.12.2 Recommendations

No protective measures or procedures specific to mould contamination and/or water damage are considered necessary at this time.

3.13 Polychlorinated Biphenyls (PCBs)

3.13.1 Results

No sources of polychlorinated biphenyls (PCBs) were observed in the subject building.

3.13.2 Recommendations

No protective measures or procedures specific to polychlorinated biphenyls (PCBs) are

considered necessary.

3.14 Ozone Depleting and Global Warming Substances

3.14.1 Results

No fixed equipment suspected to contain ODS/GWS was observed in the subject building.

3.14.2 Recommendations

No protective measures or procedures specific to ozone depleting and global warming substances are considered necessary.

4.0 CORRECTIVE ACTIONS

There are no corrective actions for designated substances and hazardous materials.

5.0 LIMITATIONS

The information and recommendations detailed in this report were carried out by trained professional and technical staff in accordance with generally accepted environmental and industrial hygiene work practices and procedures. Recommendations provided in this report have been generated in accordance with accepted industry guidelines and practices. These guidelines and practices are considered acceptable as of the date of this report.

In preparation of this report, Safetech Environmental Limited (Safetech) relied on information including testing services provided by independent laboratories. Except as expressly set out in this report, Safetech has not made any independent verification of this information provided by independent entities.

Conclusions are based on site conditions at the time of inspection and can only be extrapolated to an undefined limited area around inspected locations. The extent of the limited area depends on building construction and conditions. Safetech cannot warrant against undiscovered environmental liabilities. If any information becomes available that differs from the findings in this report, we request that we be notified immediately to reassess the conclusions provided herein.

This report has been prepared for the sole use of the person or entity to who it is addressed. No other person or entity is entitled to use or rely upon this report without the express written consent of Safetech Environmental Limited and the person or entity to who it is addressed. Any use that a third party makes of this report, or any reliance based on conclusions and recommendations made, are the responsibility of such third parties. Safetech accepts no responsibility for damages suffered by third parties as a result of actions based on this report.

Appendix I - Hazardous Materials Room by Room Inventory Sheet

APPENDIX I - HAZARDOUS MATERIALS INVENTORY SHEET

Building Address:	60 Brant Street	Date(s) of Current Reassessment:	October 17, 2024
Building Name:	Eva's Phoenix - Transitional Housing	Organization Completing Reassessment:	Safetech Environmental Limited

Summary of Findings

Vinyl Sheet Flooring identified within the Kitchen (1-07) is suspected to contain asbestos content.

All Hazardous Materials observed in GOOD condition.

Mastic is assumed to be present underneath existing Vinyl Sheet Flooring throughout the facility. Complete sampling of mastic is recommended prior to any flooring renovations.

Location Number	Location Name	Building System	Material Observed	Potential Hazardous Material	Sample ID	Asbestos Type/Content	Quantity	Condition	Notes/Required Action
0-00	Building Exterior	Roof	Roofing Material	Asbestos	Not Sampled	ACM Assumed	N/A	N/A	
0-00	Building Exterior	Windows	Window Caulking	Asbestos	Not Sampled	ACM Assumed	N/A	N/A	
0-00	Building Exterior	Wall	N/A	N/A	N/A	N/A	N/A	N/A	
B-01	Open Office Area	Floor	Concrete	N/A	N/A	N/A	N/A	N/A	
B-01	Open Office Area	Walls	Drywall (DJC)	Asbestos	20563-SSH06-ASB-01a	None Detected	N/A	N/A	
B-01	Open Office Area	Walls	Brick	N/A	N/A	N/A	N/A	N/A	
B-01	Open Office Area	Ceiling	N/A	N/A	N/A	N/A	N/A	N/A	
B-01	Open Office Area	Structure	Concrete	N/A	N/A	N/A	N/A	N/A	
B-01	Open Office Area	Pipe	Fibreglass	N/A	N/A	N/A	N/A	N/A	
B-01	Open Office Area	Duct	Fibreglass	N/A	N/A	N/A	N/A	N/A	
B-02	Office 1	Floor	Concrete	N/A	N/A	N/A	N/A	N/A	
B-02	Office 1	Walls	Drywall (DJC)	Asbestos	20563-SSH06-ASB-01e	None Detected	N/A	N/A	
B-02	Office 1	Walls	Brick	N/A	N/A	N/A	N/A	N/A	
B-02	Office 1	Ceiling	N/A	N/A	N/A	N/A	N/A	N/A	
B-02	Office 1	Structure	Concrete	N/A	N/A	N/A	N/A	N/A	
B-02	Office 1	Pipe	Fibreglass	N/A	N/A	N/A	N/A	N/A	
B-02	Office 1	Duct	Fibreglass	N/A	N/A	N/A	N/A	N/A	
B-03	Office 2	Floor	Concrete	N/A	N/A	N/A	N/A	N/A	
B-03	Office 2	Walls	Drywall (DJC)	Asbestos	20563-SSH06-ASB-01f	None Detected	N/A	N/A	
B-03	Office 2	Walls	Brick	N/A	N/A	N/A	N/A	N/A	
B-03	Office 2	Ceiling	N/A	N/A	N/A	N/A	N/A	N/A	
B-03	Office 2	Structure	Concrete	N/A	N/A	N/A	N/A	N/A	
B-03	Office 2	Pipe	Fibreglass	N/A	N/A	N/A	N/A	N/A	

APPENDIX I - HAZARDOUS MATERIALS INVENTORY SHEET

Location Number	Location Name	Building System	Material Observed	Potential Hazardous Material	Sample ID	Asbestos Type/Content	Quantity	Condition	Notes/Required Action
B-03	Office 2	Duct	Fibreglass	N/A	N/A	N/A	N/A	N/A	
B-04	Print Room	Floor	Concrete	N/A	N/A	N/A	N/A	N/A	
B-04	Print Room	Walls	Drywall (DJC)	Asbestos	20563-SSH06-ASB-01b,c	None Detected	N/A	N/A	
B-04	Print Room	Walls	Brick	N/A	N/A	N/A	N/A	N/A	
B-04	Print Room	Ceiling	N/A	N/A	N/A	N/A	N/A	N/A	
B-04	Print Room	Structure	Concrete	N/A	N/A	N/A	N/A	N/A	
B-04	Print Room	Pipe	Fibreglass	N/A	N/A	N/A	N/A	N/A	
B-04	Print Room	Duct	Fibreglass	N/A	N/A	N/A	N/A	N/A	
B-05	Print Room 2	Floor	Concrete	N/A	N/A	N/A	N/A	N/A	
B-05	Print Room 2	Walls	Drywall (DJC)	Asbestos	20563-SSH06-ASB-01d	None Detected	N/A	N/A	
B-05	Print Room 2	Walls	Brick	N/A	N/A	N/A	N/A	N/A	
B-05	Print Room 2	Ceiling	N/A	N/A	N/A	N/A	N/A	N/A	
B-05	Print Room 2	Structure	Concrete	N/A	N/A	N/A	N/A	N/A	
B-05	Print Room 2	Pipe	Fibreglass	N/A	N/A	N/A	N/A	N/A	
B-05	Print Room 2	Duct	Fibreglass	N/A	N/A	N/A	N/A	N/A	
B-06	Open Print Shop	Floor	Concrete	N/A	N/A	N/A	N/A	N/A	
B-06	Open Print Shop	Walls	Drywall (DJC)	Asbestos	Not Sampled	Visually Consistent with 20563-SSH06-ASB-01 (None Detected)	N/A	N/A	
B-06	Open Print Shop	Walls	Concrete Block	N/A	N/A	N/A	N/A	N/A	Not Observed 2020 ECOH Reassessment.
B-06	Open Print Shop	Walls	Ceramic	Lead	Not Sampled	Lead Assumed	N/A	N/A	
B-06	Open Print Shop	Ceiling	N/A	N/A	N/A	N/A	N/A	N/A	
B-06	Open Print Shop	Structure	Concrete	N/A	N/A	N/A	N/A	N/A	
B-06	Open Print Shop	Pipe	Fibreglass	N/A	N/A	N/A	N/A	N/A	
B-06	Open Print Shop	Duct	Fibreglass	N/A	N/A	N/A	N/A	N/A	
B-07	Maintenance Room	Floor	Concrete	N/A	N/A	N/A	N/A	N/A	
B-07	Maintenance Room	Walls	Drywall (DJC)	Asbestos	Not Sampled	Visually Consistent with 20563-SSH06-ASB-01 (None Detected)	N/A	N/A	
B-07	Maintenance Room	Walls	Concrete Block	N/A	N/A	N/A	N/A	N/A	Not Observed 2020 ECOH Reassessment.

APPENDIX I - HAZARDOUS MATERIALS INVENTORY SHEET

Location Number	Location Name	Building System	Material Observed	Potential Hazardous Material	Sample ID	Asbestos Type/Content	Quantity	Condition	Notes/Required Action
B-07	Maintenance Room	Ceiling	N/A	N/A	N/A	N/A	N/A	N/A	
B-07	Maintenance Room	Structure	Concrete	N/A	N/A	N/A	N/A	N/A	
B-07	Maintenance Room	Pipe	Fibreglass	N/A	N/A	N/A	N/A	N/A	
B-07	Maintenance Room	Duct	Fibreglass	N/A	N/A	N/A	N/A	N/A	
B-08	Storage Room	Floor	Concrete	N/A	N/A	N/A	N/A	N/A	
B-08	Storage Room	Walls	Drywall (DJC)	Asbestos	Not Sampled	Visually Consistent with 20563-SSH06-ASB-01 (None Detected)	N/A	N/A	
B-08	Storage Room	Walls	Concrete Block	N/A	N/A	N/A	N/A	N/A	
B-08	Storage Room	Ceiling	N/A	N/A	N/A	N/A	N/A	N/A	
B-08	Storage Room	Structure	Concrete	N/A	N/A	N/A	N/A	N/A	
B-08	Storage Room	Pipe	Fibreglass	N/A	N/A	N/A	N/A	N/A	
B-08	Storage Room	Duct	Fibreglass	N/A	N/A	N/A	N/A	N/A	
B-09	Mechanical Room	Floor	Concrete	N/A	N/A	N/A	N/A	N/A	
B-09	Mechanical Room	Walls	Brick	N/A	N/A	N/A	N/A	N/A	
B-09	Mechanical Room	Walls	Concrete Block	N/A	N/A	N/A	N/A	N/A	
B-09	Mechanical Room	Ceiling	N/A	N/A	N/A	N/A	N/A	N/A	
B-09	Mechanical Room	Structure	Concrete	N/A	N/A	N/A	N/A	N/A	
B-09	Mechanical Room	Pipe	Fibreglass	N/A	N/A	N/A	N/A	N/A	
B-09	Mechanical Room	Duct	Fibreglass	N/A	N/A	N/A	N/A	N/A	
B-10	Electrical Room	Floor	Concrete	N/A	N/A	N/A	N/A	N/A	
B-10	Electrical Room	Walls	Brick	N/A	N/A	N/A	N/A	N/A	
B-10	Electrical Room	Walls	Concrete Block	N/A	N/A	N/A	N/A	N/A	
B-10	Electrical Room	Ceiling	N/A	N/A	N/A	N/A	N/A	N/A	
B-10	Electrical Room	Structure	Concrete	N/A	N/A	N/A	N/A	N/A	
B-10	Electrical Room	Pipe	Fibreglass	N/A	N/A	N/A	N/A	N/A	
B-10	Electrical Room	Duct	Fibreglass	N/A	N/A	N/A	N/A	N/A	
B-11	Washroom	Floor	Concrete	N/A	N/A	N/A	N/A	N/A	

APPENDIX I - HAZARDOUS MATERIALS INVENTORY SHEET

Location Number	Location Name	Building System	Material Observed	Potential Hazardous Material	Sample ID	Asbestos Type/Content	Quantity	Condition	Notes/Required Action
B-11	Washroom	Walls	Drywall (DJC)	Asbestos	Not Sampled	Visually Consistent with 20563-SSH06-ASB-01 (None Detected)	N/A	N/A	
B-11	Washroom	Walls	Ceramic	Lead	Not Sampled	Lead Assumed	N/A	N/A	
B-11	Washroom	Ceiling	N/A	N/A	N/A	N/A	N/A	N/A	
B-11	Washroom	Structure	Concrete	N/A	N/A	N/A	N/A	N/A	
B-11	Washroom	Pipe	Fibreglass	N/A	N/A	N/A	N/A	N/A	
B-11	Washroom	Duct	Fibreglass	N/A	N/A	N/A	N/A	N/A	
B-12	Washroom 013	Floor	Concrete	N/A	N/A	N/A	N/A	N/A	
B-12	Washroom 013	Walls	Drywall (DJC)	Asbestos	Not Sampled	Visually Consistent with 20563-SSH06-ASB-01 (None Detected)	N/A	N/A	
B-12	Washroom 013	Walls	Ceramic	Lead	Not Sampled	Lead Assumed	N/A	N/A	
B-12	Washroom 013	Ceiling	N/A	N/A	N/A	N/A	N/A	N/A	
B-12	Washroom 013	Structure	Concrete	N/A	N/A	N/A	N/A	N/A	
B-12	Washroom 013	Pipe	Fibreglass	N/A	N/A	N/A	N/A	N/A	
B-12	Washroom 013	Duct	Fibreglass	N/A	N/A	N/A	N/A	N/A	
B-13	Washroom	Floor	Concrete	N/A	N/A	N/A	N/A	N/A	
B-13	Washroom	Walls	Drywall (DJC)	Asbestos	Not Sampled	Visually Consistent with 20563-SSH06-ASB-01 (None Detected)	N/A	N/A	
B-13	Washroom	Walls	Ceramic	Lead	Not Sampled	Lead Assumed	N/A	N/A	
B-13	Washroom	Ceiling	N/A	N/A	N/A	N/A	N/A	N/A	
B-13	Washroom	Structure	Concrete	N/A	N/A	N/A	N/A	N/A	
B-13	Washroom	Pipe	Fibreglass	N/A	N/A	N/A	N/A	N/A	
B-13	Washroom	Duct	Fibreglass	N/A	N/A	N/A	N/A	N/A	
B-14	Storage Room	Floor	Concrete	N/A	N/A	N/A	N/A	N/A	
B-14	Storage Room	Walls	Brick	N/A	N/A	N/A	N/A	N/A	
B-14	Storage Room	Ceiling	N/A	N/A	N/A	N/A	N/A	N/A	
B-14	Storage Room	Structure	Concrete	N/A	N/A	N/A	N/A	N/A	
B-14	Storage Room	Pipe	Fibreglass	N/A	N/A	N/A	N/A	N/A	

APPENDIX I - HAZARDOUS MATERIALS INVENTORY SHEET

Location Number	Location Name	Building System	Material Observed	Potential Hazardous Material	Sample ID	Asbestos Type/Content	Quantity	Condition	Notes/Required Action
B-14	Storage Room	Duct	Fibreglass	N/A	N/A	N/A	N/A	N/A	
B-15	Janitor's Closet	Floor	Concrete	N/A	N/A	N/A	N/A	N/A	
B-15	Janitor's Closet	Walls	Drywall (DJC)	Asbestos	Not Sampled	Visually Consistent with 20563-SSH06-ASB-01 (None Detected)	N/A	N/A	
B-15	Janitor's Closet	Walls	Ceramic	Lead	Not Sampled	Lead Assumed	N/A	N/A	
B-15	Janitor's Closet	Walls	Concrete Block	N/A	N/A	N/A	N/A	N/A	
B-15	Janitor's Closet	Ceiling	N/A	N/A	N/A	N/A	N/A	N/A	
B-15	Janitor's Closet	Structure	Concrete	N/A	N/A	N/A	N/A	N/A	
B-15	Janitor's Closet	Pipe	Fibreglass	N/A	N/A	N/A	N/A	N/A	
B-15	Janitor's Closet	Duct	Fibreglass	N/A	N/A	N/A	N/A	N/A	
B-16	Corridor	Floor	Concrete	N/A	N/A	N/A	N/A	N/A	
B-16	Corridor	Walls	Drywall (DJC)	Asbestos	20563-SSH06-ASB-01g	None Detected	N/A	N/A	
B-16	Corridor	Walls	Brick	N/A	N/A	N/A	N/A	N/A	
B-16	Corridor	Walls	Concrete Block	N/A	N/A	N/A	N/A	N/A	
B-16	Corridor	Ceiling	N/A	N/A	N/A	N/A	N/A	N/A	
B-16	Corridor	Structure	Concrete	N/A	N/A	N/A	N/A	N/A	
B-16	Corridor	Pipe	Fibreglass	N/A	N/A	N/A	N/A	N/A	
B-16	Corridor	Duct	Fibreglass	N/A	N/A	N/A	N/A	N/A	
B-17	Sprinkler Room	Floor	Concrete	N/A	N/A	N/A	N/A	N/A	
B-17	Sprinkler Room	Walls	Brick	N/A	N/A	N/A	N/A	N/A	
B-17	Sprinkler Room	Walls	Concrete Block	N/A	N/A	N/A	N/A	N/A	
B-17	Sprinkler Room	Ceiling	N/A	N/A	N/A	N/A	N/A	N/A	
B-17	Sprinkler Room	Structure	Concrete	N/A	N/A	N/A	N/A	N/A	
B-17	Sprinkler Room	Pipe	Fibreglass	N/A	N/A	N/A	N/A	N/A	
B-17	Sprinkler Room	Duct	Fibreglass	N/A	N/A	N/A	N/A	N/A	
B-17	Sprinkler Room	Mechanical	Meter	Mercury	N/A	N/A	1 Each	Good	Honeywell Mercury Instruments Rotary Corrector

APPENDIX I - HAZARDOUS MATERIALS INVENTORY SHEET

Location Number	Location Name	Building System	Material Observed	Potential Hazardous Material	Sample ID	Asbestos Type/Content	Quantity	Condition	Notes/Required Action
B-18	West Stairwell	Floor	Concrete	N/A	N/A	N/A	N/A	N/A	
B-18	West Stairwell	Walls	Brick	N/A	N/A	N/A	N/A	N/A	
B-18	West Stairwell	Ceiling	N/A	N/A	N/A	N/A	N/A	N/A	
B-18	West Stairwell	Structure	Steel	N/A	N/A	N/A	N/A	N/A	
B-18	West Stairwell	Structure	Sprayed Fire Proofing	Asbestos	Samples 1A-1C	None Detected	N/A	Good	From Safetech Project No. 1-3230268, dated Nov 2023
1-01	Brant St. Foyer	Floor	Concrete	N/A	N/A	N/A	N/A	N/A	
1-01	Brant St. Foyer	Walls	Brick	N/A	N/A	N/A	N/A	N/A	
1-01	Brant St. Foyer	Walls	Drywall (DJC)	Asbestos	20563-SSH06-ASB-02d	None Detected	N/A	N/A	
1-01	Brant St. Foyer	Ceiling	Concrete	N/A	N/A	N/A	N/A	N/A	
1-02	Stairwell C	Floor	Concrete	N/A	N/A	N/A	N/A	N/A	
1-02	Stairwell C	Walls	Brick	N/A	N/A	N/A	N/A	N/A	
1-02	Stairwell C	Ceiling	N/A	N/A	N/A	N/A	N/A	N/A	
1-02	Stairwell C	Structure	Steel	N/A	N/A	N/A	N/A	N/A	
1-02	Stairwell C	Structure	Sprayed Fire Proofing	Asbestos	Not Sampled	None Detected	N/A	Good	From Safetech Project No. 1-3230268, dated Nov 2023
1-03	Workshop	Floor	Concrete	N/A	N/A	N/A	N/A	N/A	
1-03	Workshop	Walls	Drywall (DJC)	Asbestos	20563-SSH06-ASB-02a	None Detected	N/A	N/A	
1-03	Workshop	Ceiling	Ceiling Tile 2	N/A	N/A	N/A	N/A	N/A	CT2, 2'x4' White (Food grade - vinyl covered gypsum board)
1-03	Workshop	Structure	Concrete	N/A	N/A	N/A	N/A	N/A	
1-04	"Main Street"	Floor	Concrete	N/A	N/A	N/A	N/A	N/A	
1-04	"Main Street"	Walls	Drywall (DJC)	Asbestos	20563-SSH06-ASB-02c	None Detected	N/A	N/A	
1-04	"Main Street"	Walls	Brick	N/A	N/A	N/A	N/A	N/A	
1-04	"Main Street"	Ceiling	N/A	N/A	N/A	N/A	N/A	N/A	Open Ceiling
1-05	Lounge 128	Floor	Concrete	N/A	N/A	N/A	N/A	N/A	
1-05	Lounge 128	Walls	Drywall (DJC)	Asbestos	20563-SSH06-ASB-02b	None Detected	N/A	N/A	
1-05	Lounge 128	Walls	Brick	N/A	N/A	N/A	N/A	N/A	

APPENDIX I - HAZARDOUS MATERIALS INVENTORY SHEET

Location Number	Location Name	Building System	Material Observed	Potential Hazardous Material	Sample ID	Asbestos Type/Content	Quantity	Condition	Notes/Required Action
1-05	Lounge 128	Walls	Concrete Block	N/A	N/A	N/A	N/A	N/A	
1-05	Lounge 128	Ceiling	Drywall (DJC)	Asbestos	Not Sampled	Visually Consistent with 20563-SSH06-ASB-02 (None Detected)	N/A	N/A	
1-06	Laundry Room	Floor	Ceramic	Lead	Not Sampled	Lead Assumed	N/A	N/A	
1-06	Laundry Room	Walls	Ceramic	Lead	Not Sampled	Lead Assumed	N/A	N/A	
1-06	Laundry Room	Ceiling	Drywall (DJC)	Asbestos	Not Sampled	Visually Consistent with 20563-SSH06-ASB-02 (None Detected)	N/A	N/A	
1-06	Laundry Room	Duct	Uninsulated	N/A	N/A	N/A	N/A	N/A	
1-07	Community Kitchen	Floor	Vinyl Sheet Flooring (VSF01)	Asbestos	Not Sampled	ACM Assumed	~600 sf	Good	VSF-01 - Vinyl Sheet Flooring (Textured, Dark Blue) Looks New
1-07	Community Kitchen	Walls	Brick	N/A	N/A	N/A	N/A	N/A	
1-07	Community Kitchen	Walls	Ceramic	Lead	Not Sampled	Lead Assumed	N/A	N/A	
1-07	Community Kitchen	Ceiling	Ceiling Tile 2	N/A	N/A	N/A	N/A	N/A	CT2, 2'x4' White (Food grade - vinyl covered gypsum board)
1-07	Community Kitchen	Structure	Concrete	N/A	N/A	N/A	N/A	N/A	
1-07	Community Kitchen	Duct	Fibreglass	N/A	N/A	N/A	N/A	N/A	
1-08a	House 1 - Kitchen	Floor	Concrete	N/A	N/A	N/A	N/A	N/A	
1-08a	House 1 - Kitchen	Walls	Drywall (DJC)	Asbestos	Not Sampled	Visually Consistent with 20563-SSH06-ASB-02 (None Detected)	N/A	N/A	
1-08a	House 1 - Kitchen	Walls	Ceramic	Lead	Not Sampled	Lead Assumed	N/A	N/A	
1-08a	House 1 - Kitchen	Ceiling	Drywall (DJC)	Asbestos	Not Sampled	Visually Consistent with 20563-SSH06-ASB-02 (None Detected)	N/A	N/A	
1-08b	House 1 - Washroom	Floor	Ceramic	Lead	Not Sampled	Lead Assumed	N/A	N/A	
1-08b	House 1 - Washroom	Walls	Ceramic	Lead	Not Sampled	Lead Assumed	N/A	N/A	
1-08b	House 1 - Washroom	Ceiling	Drywall (DJC)	Asbestos	Not Sampled	Visually Consistent with 20563-SSH06-ASB-02 (None Detected)	N/A	N/A	
1-08c	House 1 - Storage Room	Floor	Concrete	N/A	N/A	N/A	N/A	N/A	
1-08c	House 1 - Storage Room	Walls	Drywall (DJC)	Asbestos	Not Sampled	Visually Consistent with 20563-SSH06-ASB-02 (None Detected)	N/A	N/A	
1-08c	House 1 - Storage Room	Ceiling	Drywall (DJC)	Asbestos	Not Sampled	Visually Consistent with 20563-SSH06-ASB-02 (None Detected)	N/A	N/A	
1-09a	House 2 - Kitchen	Floor	Concrete	N/A	N/A	N/A	N/A	N/A	
1-09a	House 2 - Kitchen	Walls	Drywall (DJC)	Asbestos	20563-SSH06-ASB-02e	None Detected	N/A	N/A	
1-09a	House 2 - Kitchen	Walls	Ceramic	Lead	Not Sampled	Lead Assumed	N/A	N/A	

APPENDIX I - HAZARDOUS MATERIALS INVENTORY SHEET

Location Number	Location Name	Building System	Material Observed	Potential Hazardous Material	Sample ID	Asbestos Type/Content	Quantity	Condition	Notes/Required Action
1-09a	House 2 - Kitchen	Ceiling	Drywall (DJC)	Asbestos	Not Sampled	Visually Consistent with 20563-SSH06-ASB-02 (None Detected)	N/A	N/A	
1-09b	House 2 - Washroom	Floor	Ceramic	Lead	Not Sampled	Lead Assumed	N/A	N/A	
1-09b	House 2 - Washroom	Walls	Ceramic	Lead	Not Sampled	Lead Assumed	N/A	N/A	
1-09b	House 2 - Washroom	Ceiling	Drywall (DJC)	Asbestos	Not Sampled	Visually Consistent with 20563-SSH06-ASB-02 (None Detected)	N/A	N/A	
1-09c	House 2 - Storage Room	Floor	Concrete	N/A	N/A	N/A	N/A	N/A	
1-09c	House 2 - Storage Room	Walls	Drywall (DJC)	Asbestos	Not Sampled	Visually Consistent with 20563-SSH06-ASB-02 (None Detected)	N/A	N/A	
1-09c	House 2 - Storage Room	Ceiling	Drywall (DJC)	Asbestos	Not Sampled	Visually Consistent with 20563-SSH06-ASB-02 (None Detected)	N/A	N/A	
1-10a	House 3 - Kitchen	Floor	Concrete	N/A	N/A	N/A	N/A	N/A	
1-10a	House 3 - Kitchen	Walls	Drywall (DJC)	Asbestos	Not Sampled	Visually Consistent with 20563-SSH06-ASB-02 (None Detected)	N/A	N/A	
1-10a	House 3 - Kitchen	Walls	Ceramic	Lead	Not Sampled	Lead Assumed	N/A	N/A	
1-10a	House 3 - Kitchen	Ceiling	Drywall (DJC)	Asbestos	Not Sampled	Visually Consistent with 20563-SSH06-ASB-02 (None Detected)	N/A	N/A	
1-10b	House 3 - Washroom	Floor	Ceramic	Lead	Not Sampled	Lead Assumed	N/A	N/A	
1-10b	House 3 - Washroom	Walls	Ceramic	Lead	Not Sampled	Lead Assumed	N/A	N/A	
1-10b	House 3 - Washroom	Ceiling	Drywall (DJC)	Asbestos	Not Sampled	Visually Consistent with 20563-SSH06-ASB-02 (None Detected)	N/A	N/A	
1-10c	House 3 - Storage Room	Floor	Concrete	N/A	N/A	N/A	N/A	N/A	
1-10c	House 3 - Storage Room	Walls	Drywall (DJC)	Asbestos	Not Sampled	Visually Consistent with 20563-SSH06-ASB-02 (None Detected)	N/A	N/A	
1-10c	House 3 - Storage Room	Ceiling	Drywall (DJC)	Asbestos	Not Sampled	Visually Consistent with 20563-SSH06-ASB-02 (None Detected)	N/A	N/A	
1-11a	House 4 - Kitchen	Floor	Concrete	N/A	N/A	N/A	N/A	N/A	
1-11a	House 4 - Kitchen	Walls	Drywall (DJC)	Asbestos	Not Sampled	Visually Consistent with 20563-SSH06-ASB-02 (None Detected)	N/A	N/A	
1-11a	House 4 - Kitchen	Walls	Ceramic	Lead	Not Sampled	Lead Assumed	N/A	N/A	
1-11a	House 4 - Kitchen	Ceiling	Drywall (DJC)	Asbestos	Not Sampled	Visually Consistent with 20563-SSH06-ASB-02 (None Detected)	N/A	N/A	
1-11b	House 4 - Washroom	Floor	Ceramic	Lead	Not Sampled	Lead Assumed	N/A	N/A	
1-11b	House 4 - Washroom	Walls	Ceramic	Lead	Not Sampled	Lead Assumed	N/A	N/A	
1-11b	House 4 - Washroom	Ceiling	Drywall (DJC)	Asbestos	Not Sampled	Visually Consistent with 20563-SSH06-ASB-02 (None Detected)	N/A	N/A	

APPENDIX I - HAZARDOUS MATERIALS INVENTORY SHEET

Location Number	Location Name	Building System	Material Observed	Potential Hazardous Material	Sample ID	Asbestos Type/Content	Quantity	Condition	Notes/Required Action
1-11c	House 4 - Storage Room	Floor	Concrete	N/A	N/A	N/A	N/A	N/A	
1-11c	House 4 - Storage Room	Walls	Drywall (DJC)	Asbestos	Not Sampled	Visually Consistent with 20563-SSH06-ASB-02 (None Detected)	N/A	N/A	
1-11c	House 4 - Storage Room	Ceiling	Drywall (DJC)	Asbestos	Not Sampled	Visually Consistent with 20563-SSH06-ASB-02 (None Detected)	N/A	N/A	
1-12a	House 5 - Kitchen	Floor	Concrete	N/A	N/A	N/A	N/A	N/A	
1-12a	House 5 - Kitchen	Walls	Drywall (DJC)	Asbestos	Not Sampled	Visually Consistent with 20563-SSH06-ASB-02 (None Detected)	N/A	N/A	
1-12a	House 5 - Kitchen	Walls	Ceramic	Lead	Not Sampled	Lead Assumed	N/A	N/A	
1-12a	House 5 - Kitchen	Ceiling	Drywall (DJC)	Asbestos	Not Sampled	Visually Consistent with 20563-SSH06-ASB-02 (None Detected)	N/A	N/A	
1-12b	House 5 - Washroom	Floor	Ceramic	Lead	Not Sampled	Lead Assumed	N/A	N/A	
1-12b	House 5 - Washroom	Walls	Ceramic	Lead	Not Sampled	Lead Assumed	N/A	N/A	
1-12b	House 5 - Washroom	Ceiling	Drywall (DJC)	Asbestos	Not Sampled	Visually Consistent with 20563-SSH06-ASB-02 (None Detected)	N/A	N/A	
1-12c	House 5 - Storage Room	Floor	Concrete	N/A	N/A	N/A	N/A	N/A	
1-12c	House 5 - Storage Room	Walls	Drywall (DJC)	Asbestos	Not Sampled	Visually Consistent with 20563-SSH06-ASB-02 (None Detected)	N/A	N/A	
1-12c	House 5 - Storage Room	Ceiling	Drywall (DJC)	Asbestos	Not Sampled	Visually Consistent with 20563-SSH06-ASB-02 (None Detected)	N/A	N/A	
1-13a	House 6 - Kitchen	Floor	Concrete	N/A	N/A	N/A	N/A	N/A	
1-13a	House 6 - Kitchen	Walls	Drywall (DJC)	Asbestos	20563-SSH06-ASB-02f	None Detected	N/A	N/A	
1-13a	House 6 - Kitchen	Walls	Ceramic	Lead	Not Sampled	Lead Assumed	N/A	N/A	
1-13a	House 6 - Kitchen	Ceiling	Drywall (DJC)	Asbestos	Not Sampled	Visually Consistent with 20563-SSH06-ASB-02 (None Detected)	N/A	N/A	
1-13b	House 6 - Washroom	Floor	Ceramic	Lead	Not Sampled	Lead Assumed	N/A	N/A	
1-13b	House 6 - Washroom	Walls	Ceramic	Lead	Not Sampled	Lead Assumed	N/A	N/A	
1-13b	House 6 - Washroom	Ceiling	Drywall (DJC)	Asbestos	Not Sampled	Visually Consistent with 20563-SSH06-ASB-02 (None Detected)	N/A	N/A	
1-13c	House 6 - Storage Room	Floor	Concrete	N/A	N/A	N/A	N/A	N/A	
1-13c	House 6 - Storage Room	Walls	Drywall (DJC)	Asbestos	Not Sampled	Visually Consistent with 20563-SSH06-ASB-02 (None Detected)	N/A	N/A	
1-13c	House 6 - Storage Room	Ceiling	Drywall (DJC)	Asbestos	Not Sampled	Visually Consistent with 20563-SSH06-ASB-02 (None Detected)	N/A	N/A	
1-14a	House 7 - Kitchen	Floor	Concrete	N/A	N/A	N/A	N/A	N/A	

APPENDIX I - HAZARDOUS MATERIALS INVENTORY SHEET

Location Number	Location Name	Building System	Material Observed	Potential Hazardous Material	Sample ID	Asbestos Type/Content	Quantity	Condition	Notes/Required Action
1-14a	House 7 - Kitchen	Walls	Drywall (DJC)	Asbestos	Not Sampled	Visually Consistent with 20563-SSH06-ASB-02 (None Detected)	N/A	N/A	
1-14a	House 7 - Kitchen	Walls	Ceramic	Lead	Not Sampled	Lead Assumed	N/A	N/A	
1-14a	House 7 - Kitchen	Ceiling	Drywall (DJC)	Asbestos	Not Sampled	Visually Consistent with 20563-SSH06-ASB-02 (None Detected)	N/A	N/A	
1-14b	House 7 - Washroom	Floor	Ceramic	Lead	Not Sampled	Lead Assumed	N/A	N/A	
1-14b	House 7 - Washroom	Walls	Ceramic	Lead	Not Sampled	Lead Assumed	N/A	N/A	
1-14b	House 7 - Washroom	Ceiling	Drywall (DJC)	Asbestos	Not Sampled	Visually Consistent with 20563-SSH06-ASB-02 (None Detected)	N/A	N/A	
1-14c	House 7 - Storage Room	Floor	Concrete	N/A	N/A	N/A	N/A	N/A	
1-14c	House 7 - Storage Room	Walls	Drywall (DJC)	Asbestos	Not Sampled	Visually Consistent with 20563-SSH06-ASB-02 (None Detected)	N/A	N/A	
1-14c	House 7 - Storage Room	Ceiling	Drywall (DJC)	Asbestos	Not Sampled	Visually Consistent with 20563-SSH06-ASB-02 (None Detected)	N/A	N/A	
1-14d	House 7 - Room 7-1	Floor	Concrete	N/A	N/A	N/A	N/A	N/A	
1-14d	House 7 - Room 7-1	Walls	Drywall (DJC)	Asbestos	Not Sampled	Visually Consistent with 20563-SSH06-ASB-02 (None Detected)	N/A	N/A	
1-14d	House 7 - Room 7-1	Ceiling	Drywall (DJC)	Asbestos	Not Sampled	Visually Consistent with 20563-SSH06-ASB-02 (None Detected)	N/A	N/A	
1-15a	House 8 - Kitchen	Floor	Concrete	N/A	N/A	N/A	N/A	N/A	
1-15a	House 8 - Kitchen	Walls	Drywall (DJC)	Asbestos	Not Sampled	Visually Consistent with 20563-SSH06-ASB-02 (None Detected)	N/A	N/A	
1-15a	House 8 - Kitchen	Walls	Ceramic	Lead	Not Sampled	Lead Assumed	N/A	N/A	
1-15a	House 8 - Kitchen	Ceiling	Drywall (DJC)	Asbestos	Not Sampled	Visually Consistent with 20563-SSH06-ASB-02 (None Detected)	N/A	N/A	
1-15b	House 8 - Washroom	Floor	Ceramic	Lead	Not Sampled	Lead Assumed	N/A	N/A	
1-15b	House 8 - Washroom	Walls	Ceramic	Lead	Not Sampled	Lead Assumed	N/A	N/A	
1-15b	House 8 - Washroom	Ceiling	Drywall (DJC)	Asbestos	Not Sampled	Visually Consistent with 20563-SSH06-ASB-02 (None Detected)	N/A	N/A	
1-15c	House 8 - Storage Room	Floor	Concrete	N/A	N/A	N/A	N/A	N/A	
1-15c	House 8 - Storage Room	Walls	Drywall (DJC)	Asbestos	Not Sampled	Visually Consistent with 20563-SSH06-ASB-02 (None Detected)	N/A	N/A	
1-15c	House 8 - Storage Room	Ceiling	Drywall (DJC)	Asbestos	Not Sampled	Visually Consistent with 20563-SSH06-ASB-02 (None Detected)	N/A	N/A	
1-16a	House 9 - Kitchen	Floor	Concrete	N/A	N/A	N/A	N/A	N/A	

APPENDIX I - HAZARDOUS MATERIALS INVENTORY SHEET

Location Number	Location Name	Building System	Material Observed	Potential Hazardous Material	Sample ID	Asbestos Type/Content	Quantity	Condition	Notes/Required Action
1-16a	House 9 - Kitchen	Walls	Drywall (DJC)	Asbestos	Not Sampled	Visually Consistent with 20563-SSH06-ASB-02 (None Detected)	N/A	N/A	
1-16a	House 9 - Kitchen	Walls	Ceramic	Lead	Not Sampled	Lead Assumed	N/A	N/A	
1-16a	House 9 - Kitchen	Ceiling	Drywall (DJC)	Asbestos	Not Sampled	Visually Consistent with 20563-SSH06-ASB-02 (None Detected)	N/A	N/A	
1-16b	House 9 - Washroom	Floor	Ceramic	Lead	Not Sampled	Lead Assumed	N/A	N/A	
1-16b	House 9 - Washroom	Walls	Ceramic	Lead	Not Sampled	Lead Assumed	N/A	N/A	
1-16b	House 9 - Washroom	Ceiling	Drywall (DJC)	Asbestos	Not Sampled	Visually Consistent with 20563-SSH06-ASB-02 (None Detected)	N/A	N/A	
1-16c	House 9 - Storage Room	Floor	Concrete	N/A	N/A	N/A	N/A	N/A	
1-16c	House 9 - Storage Room	Walls	Drywall (DJC)	Asbestos	Not Sampled	Visually Consistent with 20563-SSH06-ASB-02 (None Detected)	N/A	N/A	
1-16c	House 9 - Storage Room	Ceiling	Drywall (DJC)	Asbestos	Not Sampled	Visually Consistent with 20563-SSH06-ASB-02 (None Detected)	N/A	N/A	
1-16d	House 9 - Room 9-1	Floor	Concrete	N/A	N/A	N/A	N/A	N/A	
1-16d	House 9 - Room 9-1	Walls	Drywall (DJC)	Asbestos	Not Sampled	Visually Consistent with 20563-SSH06-ASB-02 (None Detected)	N/A	N/A	
1-16d	House 9 - Room 9-1	Ceiling	Drywall (DJC)	Asbestos	Not Sampled	Visually Consistent with 20563-SSH06-ASB-02 (None Detected)	N/A	N/A	
1-17a	House 10 - Kitchen	Floor	Concrete	N/A	N/A	N/A	N/A	N/A	
1-17a	House 10 - Kitchen	Walls	Drywall (DJC)	Asbestos	Not Sampled	Visually Consistent with 20563-SSH06-ASB-02 (None Detected)	N/A	N/A	
1-17a	House 10 - Kitchen	Walls	Ceramic	Lead	Not Sampled	Lead Assumed	N/A	N/A	
1-17a	House 10 - Kitchen	Ceiling	Drywall (DJC)	Asbestos	Not Sampled	Visually Consistent with 20563-SSH06-ASB-02 (None Detected)	N/A	N/A	
1-17b	House 10 - Washroom	Floor	Ceramic	Lead	Not Sampled	Lead Assumed	N/A	N/A	
1-17b	House 10 - Washroom	Walls	Ceramic	Lead	Not Sampled	Lead Assumed	N/A	N/A	
1-17b	House 10 - Washroom	Ceiling	Drywall (DJC)	Asbestos	Not Sampled	Visually Consistent with 20563-SSH06-ASB-02 (None Detected)	N/A	N/A	
1-17c	House 10 - Storage Room	Floor	Concrete	N/A	N/A	N/A	N/A	N/A	
1-17c	House 10 - Storage Room	Walls	Drywall (DJC)	Asbestos	Not Sampled	Visually Consistent with 20563-SSH06-ASB-02 (None Detected)	N/A	N/A	
1-17c	House 10 - Storage Room	Ceiling	Drywall (DJC)	Asbestos	Not Sampled	Visually Consistent with 20563-SSH06-ASB-02 (None Detected)	N/A	N/A	
2-01	Stairwell B	Floor	Concrete	N/A	N/A	N/A	N/A	N/A	
2-01	Stairwell B	Walls	Brick	N/A	N/A	N/A	N/A	N/A	

APPENDIX I - HAZARDOUS MATERIALS INVENTORY SHEET

Location Number	Location Name	Building System	Material Observed	Potential Hazardous Material	Sample ID	Asbestos Type/Content	Quantity	Condition	Notes/Required Action
2-01	Stairwell B	Ceiling	N/A	N/A	N/A	N/A	N/A	N/A	
2-01	Stairwell B	Structure	Wood	N/A	N/A	N/A	N/A	N/A	
2-02	Reception	Floor	Concrete	N/A	N/A	N/A	N/A	N/A	
2-02	Reception	Walls	Brick	N/A	N/A	N/A	N/A	N/A	
2-02	Reception	Walls	Drywall (DJC)	Asbestos	20563-SSH06-ASB-04a	None Detected	N/A	N/A	
2-02	Reception	Ceiling	Ceiling Tile 1	Asbestos	Not Sampled	Visually confirmed non-ACM	N/A	N/A	CT1, 2'x4' Small Flecks and Pinholes Date stamp: 2017
2-02	Reception	Structure	Wood	N/A	N/A	N/A	N/A	N/A	
2-02	Reception	Duct	Fibreglass	N/A	N/A	N/A	N/A	N/A	
2-03	Classroom (234B)	Floor	Concrete	N/A	N/A	N/A	N/A	N/A	
2-03	Classroom (234B)	Walls	Brick	N/A	N/A	N/A	N/A	N/A	
2-03	Classroom (234B)	Walls	Drywall (DJC)	Asbestos	20563-SSH06-ASB-04b	None Detected	N/A	N/A	
2-03	Classroom (234B)	Ceiling	Ceiling Tile 1	Asbestos	Not Sampled	Visually confirmed non-ACM	N/A	N/A	CT1, 2'x4' Small Flecks and Pinholes Date stamp: 2017
2-03	Classroom (234B)	Structure	Wood	N/A	N/A	N/A	N/A	N/A	
2-03	Classroom (234B)	Duct	Fibreglass	N/A	N/A	N/A	N/A	N/A	
2-03	Classroom (234B)	Other	Window Caulking	Asbestos	20563-SSH06-ASB-05a-c	None Detected	N/A	N/A	White
2-04	Computer Lab (234A)	Floor	Concrete	N/A	N/A	N/A	N/A	N/A	
2-04	Computer Lab (234A)	Walls	Brick	N/A	N/A	N/A	N/A	N/A	
2-04	Computer Lab (234A)	Walls	Drywall (DJC)	Asbestos	Not Sampled	Visually Consistent with 20563-SSH06-ASB-04 (None Detected)	N/A	N/A	
2-04	Computer Lab (234A)	Ceiling	Ceiling Tile 1	Asbestos	Not Sampled	Visually confirmed non-ACM	N/A	N/A	CT1, 2'x4' Small Flecks and Pinholes Date stamp: 2017
2-04	Computer Lab (234A)	Structure	Wood	N/A	N/A	N/A	N/A	N/A	
2-04	Computer Lab (234A)	Duct	Fibreglass	N/A	N/A	N/A	N/A	N/A	
2-04	Computer Lab (234A)	Other	Window Caulking	Asbestos	Not Sampled	Visually Consistent with 20563-SSH06-ASB-05 (None Detected)	N/A	N/A	White
2-05	Open Office Area	Floor	Concrete	N/A	N/A	N/A	N/A	N/A	
2-05	Open Office Area	Walls	Brick	N/A	N/A	N/A	N/A	N/A	
2-05	Open Office Area	Walls	Drywall (DJC)	Asbestos	20563-SSH06-ASB-04d	None Detected	N/A	N/A	

APPENDIX I - HAZARDOUS MATERIALS INVENTORY SHEET

Location Number	Location Name	Building System	Material Observed	Potential Hazardous Material	Sample ID	Asbestos Type/Content	Quantity	Condition	Notes/Required Action
2-05	Open Office Area	Ceiling	Ceiling Tile 1	Asbestos	Not Sampled	Visually confirmed non-ACM	N/A	N/A	CT1, 2'x4' Small Flecks and Pinholes Date stamp: 2017
2-05	Open Office Area	Structure	Wood	N/A	N/A	N/A	N/A	N/A	
2-05	Open Office Area	Duct	Fibreglass	N/A	N/A	N/A	N/A	N/A	
2-05	Open Office Area	Other	Window Caulking	Asbestos	Not Sampled	Visually Consistent with 20563-SSH06-ASB-05 (None Detected)	N/A	N/A	White
2-05a	Janitor's Closet	Floor	Ceramic	Lead	Not Sampled	Lead Assumed	N/A	N/A	
2-05a	Janitor's Closet	Walls	Ceramic	Lead	Not Sampled	Lead Assumed	N/A	N/A	
2-05a	Janitor's Closet	Walls	Drywall (DJC)	Asbestos	Not Sampled	Visually Consistent with 20563-SSH06-ASB-04 (None Detected)	N/A	N/A	
2-05a	Janitor's Closet	Ceiling	Drywall (DJC)	Asbestos	Not Sampled	Visually Consistent with 20563-SSH06-ASB-04 (None Detected)	N/A	N/A	
2-06	Office (232)	Floor	Concrete	N/A	N/A	N/A	N/A	N/A	
2-06	Office (232)	Walls	Brick	N/A	N/A	N/A	N/A	N/A	
2-06	Office (232)	Walls	Drywall (DJC)	Asbestos	20563-SSH06-ASB-04c	None Detected	N/A	N/A	
2-06	Office (232)	Ceiling	Ceiling Tile 1	Asbestos	Not Sampled	Visually confirmed non-ACM	N/A	N/A	CT1, 2'x4' Small Flecks and Pinholes Date stamp: 2017
2-06	Office (232)	Structure	Wood	N/A	N/A	N/A	N/A	N/A	
2-06	Office (232)	Duct	Fibreglass	N/A	N/A	N/A	N/A	N/A	
2-06	Office (232)	Other	Window Caulking	Asbestos	Not Sampled	Visually Consistent with 20563-SSH06-ASB-05 (None Detected)	N/A	N/A	White
2-07	Storage Room	Floor	Concrete	N/A	N/A	N/A	N/A	N/A	
2-07	Storage Room	Walls	Brick	N/A	N/A	N/A	N/A	N/A	
2-07	Storage Room	Walls	Drywall (DJC)	Asbestos	Not Sampled	Visually Consistent with 20563-SSH06-ASB-04 (None Detected)	N/A	N/A	
2-07	Storage Room	Ceiling	Ceiling Tile 1	Asbestos	Not Sampled	Visually confirmed non-ACM	N/A	N/A	CT1, 2'x4' Small Flecks and Pinholes Date stamp: 2017
2-07	Storage Room	Structure	Wood	N/A	N/A	N/A	N/A	N/A	
2-07	Storage Room	Duct	Fibreglass	N/A	N/A	N/A	N/A	N/A	
2-07	Storage Room	Other	Window Caulking	Asbestos	Not Sampled	Visually Consistent with 20563-SSH06-ASB-05 (None Detected)	N/A	N/A	White
2-08	Washroom	Floor	Ceramic	Lead	Not Sampled	Lead Assumed	N/A	N/A	
2-08	Washroom	Walls	Ceramic	Lead	Not Sampled	Lead Assumed	N/A	N/A	

APPENDIX I - HAZARDOUS MATERIALS INVENTORY SHEET

Location Number	Location Name	Building System	Material Observed	Potential Hazardous Material	Sample ID	Asbestos Type/Content	Quantity	Condition	Notes/Required Action
2-08	Washroom	Ceiling	Drywall (DJC)	Asbestos	Not Sampled	Visually Consistent with 20563-SSH06-ASB-04 (None Detected)	N/A	N/A	
2-09a	House 1 - (Rooms 1-1 to 1-6)	Floor	Concrete	N/A	N/A	N/A	N/A	N/A	
2-09a	House 1 - (Rooms 1-1 to 1-6)	Walls	Drywall (DJC)	Asbestos	Not Sampled	Visually Consistent with 20563-SSH06-ASB-04 (None Detected)	N/A	N/A	
2-09a	House 1 - (Rooms 1-1 to 1-6)	Ceiling	Drywall (DJC)	Asbestos	Not Sampled	Visually Consistent with 20563-SSH06-ASB-04 (None Detected)	N/A	N/A	
2-09b	House 1 - Corridor	Floor	Concrete	N/A	N/A	N/A	N/A	N/A	
2-09b	House 1 - Corridor	Walls	Drywall (DJC)	Asbestos	Not Sampled	Visually Consistent with 20563-SSH06-ASB-04 (None Detected)	N/A	N/A	
2-09b	House 1 - Corridor	Ceiling	Drywall (DJC)	Asbestos	Not Sampled	Visually Consistent with 20563-SSH06-ASB-04 (None Detected)	N/A	N/A	
2-09c	House 1 - Stairwell	Floor	Wood	N/A	N/A	N/A	N/A	N/A	
2-09c	House 1 - Stairwell	Walls	Drywall (DJC)	Asbestos	Not Sampled	Visually Consistent with 20563-SSH06-ASB-04 (None Detected)	N/A	N/A	
2-09c	House 1 - Stairwell	Ceiling	Drywall (DJC)	Asbestos	Not Sampled	Visually Consistent with 20563-SSH06-ASB-04 (None Detected)	N/A	N/A	
2-10a	House 2 - (Rooms 2-1 to 2-5)	Floor	Concrete	N/A	N/A	N/A	N/A	N/A	
2-10a	House 2 - (Rooms 2-1 to 2-5)	Walls	Drywall (DJC)	Asbestos	Not Sampled	Visually Consistent with 20563-SSH06-ASB-04 (None Detected)	N/A	N/A	
2-10a	House 2 - (Rooms 2-1 to 2-5)	Ceiling	Drywall (DJC)	Asbestos	Not Sampled	Visually Consistent with 20563-SSH06-ASB-04 (None Detected)	N/A	N/A	
2-10b	House 2 - Corridor	Floor	Concrete	N/A	N/A	N/A	N/A	N/A	
2-10b	House 2 - Corridor	Walls	Drywall (DJC)	Asbestos	Not Sampled	Visually Consistent with 20563-SSH06-ASB-04 (None Detected)	N/A	N/A	
2-10b	House 2 - Corridor	Ceiling	Drywall (DJC)	Asbestos	Not Sampled	Visually Consistent with 20563-SSH06-ASB-04 (None Detected)	N/A	N/A	
2-10c	House 2 - Stairwell	Floor	Wood	N/A	N/A	N/A	N/A	N/A	
2-10c	House 2 - Stairwell	Walls	Drywall (DJC)	Asbestos	Not Sampled	Visually Consistent with 20563-SSH06-ASB-04 (None Detected)	N/A	N/A	
2-10c	House 2 - Stairwell	Ceiling	Drywall (DJC)	Asbestos	Not Sampled	Visually Consistent with 20563-SSH06-ASB-04 (None Detected)	N/A	N/A	
2-11a	House 3 - (Rooms 3-1 to 3-5)	Floor	Concrete	N/A	N/A	N/A	N/A	N/A	
2-11a	House 3 - (Rooms 3-1 to 3-5)	Walls	Drywall (DJC)	Asbestos	20563-SSH06-ASB-04e	None Detected	N/A	N/A	
2-11a	House 3 - (Rooms 3-1 to 3-5)	Ceiling	Drywall (DJC)	Asbestos	Not Sampled	Visually Consistent with 20563-SSH06-ASB-04 (None Detected)	N/A	N/A	

APPENDIX I - HAZARDOUS MATERIALS INVENTORY SHEET

Location Number	Location Name	Building System	Material Observed	Potential Hazardous Material	Sample ID	Asbestos Type/Content	Quantity	Condition	Notes/Required Action
2-11b	House 3 - Corridor	Floor	Concrete	N/A	N/A	N/A	N/A	N/A	
2-11b	House 3 - Corridor	Walls	Drywall (DJC)	Asbestos	Not Sampled	Visually Consistent with 20563-SSH06-ASB-04 (None Detected)	N/A	N/A	
2-11b	House 3 - Corridor	Ceiling	Drywall (DJC)	Asbestos	Not Sampled	Visually Consistent with 20563-SSH06-ASB-04 (None Detected)	N/A	N/A	
2-11c	House 3 - Stairwell	Floor	Wood	N/A	N/A	N/A	N/A	N/A	
2-11c	House 3 - Stairwell	Walls	Drywall (DJC)	Asbestos	Not Sampled	Visually Consistent with 20563-SSH06-ASB-04 (None Detected)	N/A	N/A	
2-11c	House 3 - Stairwell	Ceiling	Drywall (DJC)	Asbestos	Not Sampled	Visually Consistent with 20563-SSH06-ASB-04 (None Detected)	N/A	N/A	
2-12a	House 4 - (Rooms 4-1 to 4-5)	Floor	Concrete	N/A	N/A	N/A	N/A	N/A	
2-12a	House 4 - (Rooms 4-1 to 4-5)	Walls	Drywall (DJC)	Asbestos	Not Sampled	Visually Consistent with 20563-SSH06-ASB-04 (None Detected)	N/A	N/A	
2-12a	House 4 - (Rooms 4-1 to 4-5)	Ceiling	Drywall (DJC)	Asbestos	Not Sampled	Visually Consistent with 20563-SSH06-ASB-04 (None Detected)	N/A	N/A	
2-12b	House 4 - Corridor	Floor	Concrete	N/A	N/A	N/A	N/A	N/A	
2-12b	House 4 - Corridor	Walls	Drywall (DJC)	Asbestos	Not Sampled	Visually Consistent with 20563-SSH06-ASB-04 (None Detected)	N/A	N/A	
2-12b	House 4 - Corridor	Ceiling	Drywall (DJC)	Asbestos	Not Sampled	Visually Consistent with 20563-SSH06-ASB-04 (None Detected)	N/A	N/A	
2-12c	House 4 - Stairwell	Floor	Wood	N/A	N/A	N/A	N/A	N/A	
2-12c	House 4 - Stairwell	Walls	Drywall (DJC)	Asbestos	Not Sampled	Visually Consistent with 20563-SSH06-ASB-04 (None Detected)	N/A	N/A	
2-12c	House 4 - Stairwell	Ceiling	Drywall (DJC)	Asbestos	Not Sampled	Visually Consistent with 20563-SSH06-ASB-04 (None Detected)	N/A	N/A	
2-13a	House 5 - (Rooms 5-1 to 5-5)	Floor	Concrete	N/A	N/A	N/A	N/A	N/A	
2-13a	House 5 - (Rooms 5-1 to 5-5)	Walls	Drywall (DJC)	Asbestos	Not Sampled	Visually Consistent with 20563-SSH06-ASB-04 (None Detected)	N/A	N/A	
2-13a	House 5 - (Rooms 5-1 to 5-5)	Ceiling	Drywall (DJC)	Asbestos	Not Sampled	Visually Consistent with 20563-SSH06-ASB-04 (None Detected)	N/A	N/A	
2-13b	House 5 - Corridor	Floor	Concrete	N/A	N/A	N/A	N/A	N/A	
2-13b	House 5 - Corridor	Walls	Drywall (DJC)	Asbestos	Not Sampled	Visually Consistent with 20563-SSH06-ASB-04 (None Detected)	N/A	N/A	
2-13b	House 5 - Corridor	Ceiling	Drywall (DJC)	Asbestos	Not Sampled	Visually Consistent with 20563-SSH06-ASB-04 (None Detected)	N/A	N/A	
2-13c	House 5 - Stairwell	Floor	Wood	N/A	N/A	N/A	N/A	N/A	

APPENDIX I - HAZARDOUS MATERIALS INVENTORY SHEET

Location Number	Location Name	Building System	Material Observed	Potential Hazardous Material	Sample ID	Asbestos Type/Content	Quantity	Condition	Notes/Required Action
2-13c	House 5 - Stairwell	Walls	Drywall (DJC)	Asbestos	Not Sampled	Visually Consistent with 20563-SSH06-ASB-04 (None Detected)	N/A	N/A	
2-13c	House 5 - Stairwell	Ceiling	Drywall (DJC)	Asbestos	Not Sampled	Visually Consistent with 20563-SSH06-ASB-04 (None Detected)	N/A	N/A	
2-14a	House 6 - (Rooms 6-1 to 6-4)	Floor	Concrete	N/A	N/A	N/A	N/A	N/A	
2-14a	House 6 - (Rooms 6-1 to 6-4)	Walls	Drywall (DJC)	Asbestos	20563-SSH06-ASB-04f	None Detected	N/A	N/A	
2-14a	House 6 - (Rooms 6-1 to 6-4)	Ceiling	Drywall (DJC)	Asbestos	Not Sampled	Visually Consistent with 20563-SSH06-ASB-04 (None Detected)	N/A	N/A	
2-14b	House 6 - Corridor	Floor	Concrete	N/A	N/A	N/A	N/A	N/A	
2-14b	House 6 - Corridor	Walls	Drywall (DJC)	Asbestos	Not Sampled	Visually Consistent with 20563-SSH06-ASB-04 (None Detected)	N/A	N/A	
2-14b	House 6 - Corridor	Ceiling	Drywall (DJC)	Asbestos	Not Sampled	Visually Consistent with 20563-SSH06-ASB-04 (None Detected)	N/A	N/A	
2-14c	House 6 - Stairwell	Floor	Wood	N/A	N/A	N/A	N/A	N/A	
2-14c	House 6 - Stairwell	Walls	Drywall (DJC)	Asbestos	Not Sampled	Visually Consistent with 20563-SSH06-ASB-04 (None Detected)	N/A	N/A	
2-14c	House 6 - Stairwell	Ceiling	Drywall (DJC)	Asbestos	Not Sampled	Visually Consistent with 20563-SSH06-ASB-04 (None Detected)	N/A	N/A	
2-15a	House 7 - (Rooms 7-2 to 7-6)	Floor	Concrete	N/A	N/A	N/A	N/A	N/A	
2-15a	House 7 - (Rooms 7-2 to 7-6)	Walls	Drywall (DJC)	Asbestos	Not Sampled	Visually Consistent with 20563-SSH06-ASB-04 (None Detected)	N/A	N/A	
2-15a	House 7 - (Rooms 7-2 to 7-6)	Ceiling	Drywall (DJC)	Asbestos	Not Sampled	Visually Consistent with 20563-SSH06-ASB-04 (None Detected)	N/A	N/A	
2-15b	House 7 - Corridor	Floor	Concrete	N/A	N/A	N/A	N/A	N/A	
2-15b	House 7 - Corridor	Walls	Drywall (DJC)	Asbestos	Not Sampled	Visually Consistent with 20563-SSH06-ASB-04 (None Detected)	N/A	N/A	
2-15b	House 7 - Corridor	Ceiling	Drywall (DJC)	Asbestos	Not Sampled	Visually Consistent with 20563-SSH06-ASB-04 (None Detected)	N/A	N/A	
2-15c	House 7 - Stairwell	Floor	Wood	N/A	N/A	N/A	N/A	N/A	
2-15c	House 7 - Stairwell	Walls	Drywall (DJC)	Asbestos	Not Sampled	Visually Consistent with 20563-SSH06-ASB-04 (None Detected)	N/A	N/A	
2-15c	House 7 - Stairwell	Ceiling	Drywall (DJC)	Asbestos	Not Sampled	Visually Consistent with 20563-SSH06-ASB-04 (None Detected)	N/A	N/A	
2-16a	House 8 - (Rooms 8-1 to 8-4)	Floor	Concrete	N/A	N/A	N/A	N/A	N/A	
2-16a	House 8 - (Rooms 8-1 to 8-4)	Walls	Drywall (DJC)	Asbestos	20563-SSH06-ASB-04g	None Detected	N/A	N/A	

APPENDIX I - HAZARDOUS MATERIALS INVENTORY SHEET

Location Number	Location Name	Building System	Material Observed	Potential Hazardous Material	Sample ID	Asbestos Type/Content	Quantity	Condition	Notes/Required Action
2-16a	House 8 - (Rooms 8-1 to 8-4)	Ceiling	Drywall (DJC)	Asbestos	Not Sampled	Visually Consistent with 20563-SSH06-ASB-04 (None Detected)	N/A	N/A	
2-16b	House 8 - Corridor	Floor	Concrete	N/A	N/A	N/A	N/A	N/A	
2-16b	House 8 - Corridor	Walls	Drywall (DJC)	Asbestos	Not Sampled	Visually Consistent with 20563-SSH06-ASB-04 (None Detected)	N/A	N/A	
2-16b	House 8 - Corridor	Ceiling	Drywall (DJC)	Asbestos	Not Sampled	Visually Consistent with 20563-SSH06-ASB-04 (None Detected)	N/A	N/A	
2-16c	House 8 - Stairwell	Floor	Wood	N/A	N/A	N/A	N/A	N/A	
2-16c	House 8 - Stairwell	Walls	Drywall (DJC)	Asbestos	Not Sampled	Visually Consistent with 20563-SSH06-ASB-04 (None Detected)	N/A	N/A	
2-16c	House 8 - Stairwell	Ceiling	Drywall (DJC)	Asbestos	Not Sampled	Visually Consistent with 20563-SSH06-ASB-04 (None Detected)	N/A	N/A	
2-17a	House 9 - (Rooms 9-2 to 9-5)	Floor	Concrete	N/A	N/A	N/A	N/A	N/A	
2-17a	House 9 - (Rooms 9-2 to 9-5)	Walls	Drywall (DJC)	Asbestos	Not Sampled	Visually Consistent with 20563-SSH06-ASB-04 (None Detected)	N/A	N/A	
2-17a	House 9 - (Rooms 9-2 to 9-5)	Ceiling	Drywall (DJC)	Asbestos	Not Sampled	Visually Consistent with 20563-SSH06-ASB-04 (None Detected)	N/A	N/A	
2-17b	House 9 - Corridor	Floor	Concrete	N/A	N/A	N/A	N/A	N/A	
2-17b	House 9 - Corridor	Walls	Drywall (DJC)	Asbestos	Not Sampled	Visually Consistent with 20563-SSH06-ASB-04 (None Detected)	N/A	N/A	
2-17b	House 9 - Corridor	Ceiling	Drywall (DJC)	Asbestos	Not Sampled	Visually Consistent with 20563-SSH06-ASB-04 (None Detected)	N/A	N/A	
2-17c	House 9 - Stairwell	Floor	Wood	N/A	N/A	N/A	N/A	N/A	
2-17c	House 9 - Stairwell	Walls	Drywall (DJC)	Asbestos	Not Sampled	Visually Consistent with 20563-SSH06-ASB-04 (None Detected)	N/A	N/A	
2-17c	House 9 - Stairwell	Ceiling	Drywall (DJC)	Asbestos	Not Sampled	Visually Consistent with 20563-SSH06-ASB-04 (None Detected)	N/A	N/A	
2-18a	House 10 - (Rooms 10-1 to 10-5)	Floor	Concrete	N/A	N/A	N/A	N/A	N/A	
2-18a	House 10 - (Rooms 10-1 to 10-5)	Walls	Drywall (DJC)	Asbestos	Not Sampled	Visually Consistent with 20563-SSH06-ASB-04 (None Detected)	N/A	N/A	
2-18a	House 10 - (Rooms 10-1 to 10-5)	Ceiling	Drywall (DJC)	Asbestos	Not Sampled	Visually Consistent with 20563-SSH06-ASB-04 (None Detected)	N/A	N/A	
2-18b	House 10 - Corridor	Floor	Concrete	N/A	N/A	N/A	N/A	N/A	
2-18b	House 10 - Corridor	Walls	Drywall (DJC)	Asbestos	Not Sampled	Visually Consistent with 20563-SSH06-ASB-04 (None Detected)	N/A	N/A	
2-18b	House 10 - Corridor	Ceiling	Drywall (DJC)	Asbestos	Not Sampled	Visually Consistent with 20563-SSH06-ASB-04 (None Detected)	N/A	N/A	

APPENDIX I - HAZARDOUS MATERIALS INVENTORY SHEET

Location Number	Location Name	Building System	Material Observed	Potential Hazardous Material	Sample ID	Asbestos Type/Content	Quantity	Condition	Notes/Required Action
2-18c	House 10 - Stairwell	Floor	Wood	N/A	N/A	N/A	N/A	N/A	
2-18c	House 10 - Stairwell	Walls	Drywall (DJC)	Asbestos	20563-SSH06-ASB-02g	None Detected	N/A	N/A	
2-18c	House 10 - Stairwell	Ceiling	Drywall (DJC)	Asbestos	Not Sampled	Visually Consistent with 20563-SSH06-ASB-04 (None Detected)	N/A	N/A	
2-19	Mechanical Room	Floor	Concrete	N/A	N/A	N/A	N/A	N/A	
2-19	Mechanical Room	Walls	Drywall (DJC)	Asbestos	Not Sampled	Visually Consistent with 20563-SSH06-ASB-04 (None Detected)	N/A	N/A	
2-19	Mechanical Room	Duct	Fibreglass	N/A	N/A	N/A	N/A	N/A	
2-19	Mechanical Room	Ceiling	Sprayed Fire Proofing	Asbestos	Samples 1A-1C	None Detected	N/A	Good	From Safetech Project No. 1-3230268, dated Nov 2023
3-01	Office (304)	Floor	Concrete	N/A	N/A	N/A	N/A	N/A	
3-01	Office (304)	Walls	Drywall (DJC)	Asbestos	20563-SSH06-ASB-03a	None Detected	N/A	N/A	
3-01	Office (304)	Ceiling	N/A	N/A	N/A	N/A	N/A	N/A	
3-01	Office (304)	Structure	Wood	N/A	N/A	N/A	N/A	N/A	
3-01	Office (304)	Duct	Fibreglass	N/A	N/A	N/A	N/A	N/A	
3-01	Office (304)	Pipe	Fibreglass	N/A	N/A	N/A	N/A	N/A	
3-02	Boardroom (305)	Floor	Concrete	N/A	N/A	N/A	N/A	N/A	
3-02	Boardroom (305)	Walls	Drywall (DJC)	Asbestos	20563-SSH06-ASB-03e	None Detected	N/A	N/A	
3-02	Boardroom (305)	Walls	Brick	N/A	N/A	N/A	N/A	N/A	
3-02	Boardroom (305)	Ceiling	N/A	N/A	N/A	N/A	N/A	N/A	
3-02	Boardroom (305)	Structure	Wood	N/A	N/A	N/A	N/A	N/A	
3-02	Boardroom (305)	Structure	Steel	N/A	N/A	N/A	N/A	N/A	
3-02	Boardroom (305)	Duct	Fibreglass	N/A	N/A	N/A	N/A	N/A	
3-02	Boardroom (305)	Pipe	Fibreglass	N/A	N/A	N/A	N/A	N/A	
3-03	Elevator Room	Floor	Concrete	N/A	N/A	N/A	N/A	N/A	
3-03	Elevator Room	Walls	Drywall (DJC)	Asbestos	20563-SSH06-ASB-03c	None Detected	N/A	N/A	
3-03	Elevator Room	Walls	Brick	N/A	N/A	N/A	N/A	N/A	
3-03	Elevator Room	Ceiling	N/A	N/A	N/A	N/A	N/A	N/A	

APPENDIX I - HAZARDOUS MATERIALS INVENTORY SHEET

Location Number	Location Name	Building System	Material Observed	Potential Hazardous Material	Sample ID	Asbestos Type/Content	Quantity	Condition	Notes/Required Action
3-03	Elevator Room	Structure	Wood	N/A	N/A	N/A	N/A	N/A	
3-04	Janitor's Closet	Floor	Concrete	N/A	N/A	N/A	N/A	N/A	
3-04	Janitor's Closet	Walls	Drywall (DJC)	Asbestos	20563-SSH06-ASB-03b	None Detected	N/A	N/A	
3-04	Janitor's Closet	Walls	Brick	N/A	N/A	N/A	N/A	N/A	
3-04	Janitor's Closet	Walls	Ceramic	Lead	Not Sampled	Lead Assumed	N/A	N/A	
3-04	Janitor's Closet	Ceiling	N/A	N/A	N/A	N/A	N/A	N/A	
3-04	Janitor's Closet	Structure	Wood	N/A	N/A	N/A	N/A	N/A	
3-05	Storage	Floor	Concrete	N/A	N/A	N/A	N/A	N/A	
3-05	Storage	Walls	Drywall (DJC)	Asbestos	Not Sampled	Visually Consistent with 20563-SSH06-ASB-03 (None Detected)	N/A	N/A	
3-05	Storage	Ceiling	Drywall (DJC)	Asbestos	Not Sampled	Visually Consistent with 20563-SSH06-ASB-03 (None Detected)	N/A	N/A	
3-06	Office (307)	Floor	Concrete	N/A	N/A	N/A	N/A	N/A	
3-06	Office (307)	Walls	Drywall (DJC)	Asbestos	Not Sampled	Visually Consistent with 20563-SSH06-ASB-03 (None Detected)	N/A	N/A	
3-06	Office (307)	Ceiling	N/A	N/A	N/A	N/A	N/A	N/A	
3-06	Office (307)	Structure	Wood	N/A	N/A	N/A	N/A	N/A	
3-06	Office (307)	Duct	Fibreglass	N/A	N/A	N/A	N/A	N/A	
3-06	Office (307)	Pipe	Fibreglass	N/A	N/A	N/A	N/A	N/A	
3-07	Office (308)	Floor	Concrete	N/A	N/A	N/A	N/A	N/A	
3-07	Office (308)	Walls	Drywall (DJC)	Asbestos	20563-SSH06-ASB-03d	None Detected	N/A	N/A	
3-07	Office (308)	Walls	Brick	N/A	N/A	N/A	N/A	N/A	
3-07	Office (308)	Ceiling	N/A	N/A	N/A	N/A	N/A	N/A	
3-07	Office (308)	Structure	Wood	N/A	N/A	N/A	N/A	N/A	
3-07	Office (308)	Structure	Steel	N/A	N/A	N/A	N/A	N/A	
3-07	Office (308)	Duct	Fibreglass	N/A	N/A	N/A	N/A	N/A	
3-07	Office (308)	Pipe	Fibreglass	N/A	N/A	N/A	N/A	N/A	
3-08	Office (309)	Floor	Concrete	N/A	N/A	N/A	N/A	N/A	

APPENDIX I - HAZARDOUS MATERIALS INVENTORY SHEET

Location Number	Location Name	Building System	Material Observed	Potential Hazardous Material	Sample ID	Asbestos Type/Content	Quantity	Condition	Notes/Required Action
3-08	Office (309)	Walls	Drywall (DJC)	Asbestos	Not Sampled	Visually Consistent with 20563-SSH06-ASB-03 (None Detected)	N/A	N/A	
3-08	Office (309)	Ceiling	N/A	N/A	N/A	N/A	N/A	N/A	
3-08	Office (309)	Structure	Wood	N/A	N/A	N/A	N/A	N/A	
3-08	Office (309)	Duct	Fibreglass	N/A	N/A	N/A	N/A	N/A	
3-08	Office (309)	Pipe	Fibreglass	N/A	N/A	N/A	N/A	N/A	
3-09	Office (311)	Floor	Concrete	N/A	N/A	N/A	N/A	N/A	
3-09	Office (311)	Walls	Drywall (DJC)	Asbestos	Not Sampled	Visually Consistent with 20563-SSH06-ASB-03 (None Detected)	N/A	N/A	
3-09	Office (311)	Ceiling	N/A	N/A	N/A	N/A	N/A	N/A	
3-09	Office (311)	Structure	Wood	N/A	N/A	N/A	N/A	N/A	
3-09	Office (311)	Duct	Fibreglass	N/A	N/A	N/A	N/A	N/A	
3-09	Office (311)	Pipe	Fibreglass	N/A	N/A	N/A	N/A	N/A	
3-10	Office (312)	Floor	Concrete	N/A	N/A	N/A	N/A	N/A	
3-10	Office (312)	Walls	Drywall (DJC)	Asbestos	Not Sampled	Visually Consistent with 20563-SSH06-ASB-03 (None Detected)	N/A	N/A	
3-10	Office (312)	Ceiling	N/A	N/A	N/A	N/A	N/A	N/A	
3-10	Office (312)	Structure	Wood	N/A	N/A	N/A	N/A	N/A	
3-10	Office (312)	Duct	Fibreglass	N/A	N/A	N/A	N/A	N/A	
3-10	Office (312)	Pipe	Fibreglass	N/A	N/A	N/A	N/A	N/A	
3-11	Office (314)	Floor	Concrete	N/A	N/A	N/A	N/A	N/A	
3-11	Office (314)	Walls	Drywall (DJC)	Asbestos	Not Sampled	Visually Consistent with 20563-SSH06-ASB-03 (None Detected)	N/A	N/A	
3-11	Office (314)	Ceiling	N/A	N/A	N/A	N/A	N/A	N/A	
3-11	Office (314)	Structure	Wood	N/A	N/A	N/A	N/A	N/A	
3-11	Office (314)	Duct	Fibreglass	N/A	N/A	N/A	N/A	N/A	
3-11	Office (314)	Pipe	Fibreglass	N/A	N/A	N/A	N/A	N/A	

APPENDIX I - HAZARDOUS MATERIALS INVENTORY SHEET

Location Number	Location Name	Building System	Material Observed	Potential Hazardous Material	Sample ID	Asbestos Type/Content	Quantity	Condition	Notes/Required Action
3-12	Office (315)	Floor	Concrete	N/A	N/A	N/A	N/A	N/A	
3-12	Office (315)	Walls	Drywall (DJC)	Asbestos	Not Sampled	Visually Consistent with 20563-SSH06-ASB-03 (None Detected)	N/A	N/A	
3-12	Office (315)	Ceiling	N/A	N/A	N/A	N/A	N/A	N/A	
3-12	Office (315)	Structure	Wood	N/A	N/A	N/A	N/A	N/A	
3-12	Office (315)	Duct	Fibreglass	N/A	N/A	N/A	N/A	N/A	
3-12	Office (315)	Pipe	Fibreglass	N/A	N/A	N/A	N/A	N/A	
3-13	Office (316)	Floor	Concrete	N/A	N/A	N/A	N/A	N/A	
3-13	Office (316)	Walls	Drywall (DJC)	Asbestos	Not Sampled	Visually Consistent with 20563-SSH06-ASB-03 (None Detected)	N/A	N/A	
3-13	Office (316)	Ceiling	N/A	N/A	N/A	N/A	N/A	N/A	
3-13	Office (316)	Structure	Wood	N/A	N/A	N/A	N/A	N/A	
3-13	Office (316)	Duct	Fibreglass	N/A	N/A	N/A	N/A	N/A	
3-13	Office (316)	Pipe	Fibreglass	N/A	N/A	N/A	N/A	N/A	
3-14	Server Room	Floor	Concrete	N/A	N/A	N/A	N/A	N/A	
3-14	Server Room	Walls	Drywall (DJC)	Asbestos	Not Sampled	Visually Consistent with 20563-SSH06-ASB-03 (None Detected)	N/A	N/A	
3-14	Server Room	Walls	Brick	N/A	N/A	N/A	N/A	N/A	
3-14	Server Room	Ceiling	N/A	N/A	N/A	N/A	N/A	N/A	
3-14	Server Room	Structure	Wood	N/A	N/A	N/A	N/A	N/A	
3-15	Washroom	Floor	Ceramic	Lead	Not Sampled	Lead Assumed	N/A	N/A	
3-15	Washroom	Walls	Drywall (DJC)	Asbestos	Not Sampled	Visually Consistent with 20563-SSH06-ASB-03 (None Detected)	N/A	N/A	
3-15	Washroom	Walls	Ceramic	Lead	Not Sampled	Lead Assumed	N/A	N/A	
3-15	Washroom	Ceiling	N/A	N/A	N/A	N/A	N/A	N/A	
3-15	Washroom	Structure	Wood	N/A	N/A	N/A	N/A	N/A	
3-16	Washroom	Floor	Ceramic	Lead	Not Sampled	Lead Assumed	N/A	N/A	
3-16	Washroom	Walls	Drywall (DJC)	Asbestos	Not Sampled	Visually Consistent with 20563-SSH06-ASB-03 (None Detected)	N/A	N/A	

APPENDIX I - HAZARDOUS MATERIALS INVENTORY SHEET


Location Number	Location Name	Building System	Material Observed	Potential Hazardous Material	Sample ID	Asbestos Type/Content	Quantity	Condition	Notes/Required Action
3-16	Washroom	Walls	Ceramic	Lead	Not Sampled	Lead Assumed	N/A	N/A	
3-16	Washroom	Ceiling	N/A	N/A	N/A	N/A	N/A	N/A	
3-16	Washroom	Structure	Wood	N/A	N/A	N/A	N/A	N/A	
3-17	Washroom	Floor	Ceramic	Lead	Not Sampled	Lead Assumed	N/A	N/A	
3-17	Washroom	Walls	Drywall (DJC)	Asbestos	Not Sampled	Visually Consistent with 20563-SSH06-ASB-03 (None Detected)	N/A	N/A	
3-17	Washroom	Walls	Ceramic	Lead	Not Sampled	Lead Assumed	N/A	N/A	
3-17	Washroom	Ceiling	N/A	N/A	N/A	N/A	N/A	N/A	
3-17	Washroom	Structure	Wood	N/A	N/A	N/A	N/A	N/A	
3-18	Lunchroom (324)	Floor	Ceramic	Lead	Not Sampled	Lead Assumed	N/A	N/A	
3-18	Lunchroom (324)	Walls	Drywall (DJC)	Asbestos	Not Sampled	Visually Consistent with 20563-SSH06-ASB-03 (None Detected)	N/A	N/A	
3-18	Lunchroom (324)	Walls	Brick	N/A	N/A	N/A	N/A	N/A	
3-18	Lunchroom (324)	Walls	Ceramic	Lead	Not Sampled	Lead Assumed	N/A	N/A	
3-18	Lunchroom (324)	Ceiling	N/A	N/A	N/A	N/A	N/A	N/A	
3-18	Lunchroom (324)	Structure	Wood	N/A	N/A	N/A	N/A	N/A	
3-18	Lunchroom (324)	Structure	Steel	N/A	N/A	N/A	N/A	N/A	
3-18	Lunchroom (324)	Pipe	Fibreglass	N/A	N/A	N/A	N/A	N/A	
3-19	Corridors/Stairwell	Floor	Concrete	N/A	N/A	N/A	N/A	N/A	
3-19	Corridors/Stairwell	Walls	Drywall (DJC)	Asbestos	20563-SSH06-ASB-03f, g	None Detected	N/A	N/A	
3-19	Corridors/Stairwell	Walls	Brick	N/A	N/A	N/A	N/A	N/A	
3-19	Corridors/Stairwell	Ceiling	N/A	N/A	N/A	N/A	N/A	N/A	
3-19	Corridors/Stairwell	Structure	Wood	N/A	N/A	N/A	N/A	N/A	
3-19	Corridors/Stairwell	Structure	Steel	N/A	N/A	N/A	N/A	N/A	
3-19	Corridors/Stairwell	Duct	Fibreglass	N/A	N/A	N/A	N/A	N/A	
3-19	Corridors/Stairwell	Pipe	Fibreglass	N/A	N/A	N/A	N/A	N/A	
Surveyor's Field Notes									

Appendix II – Results of Bulk Sample Analysis

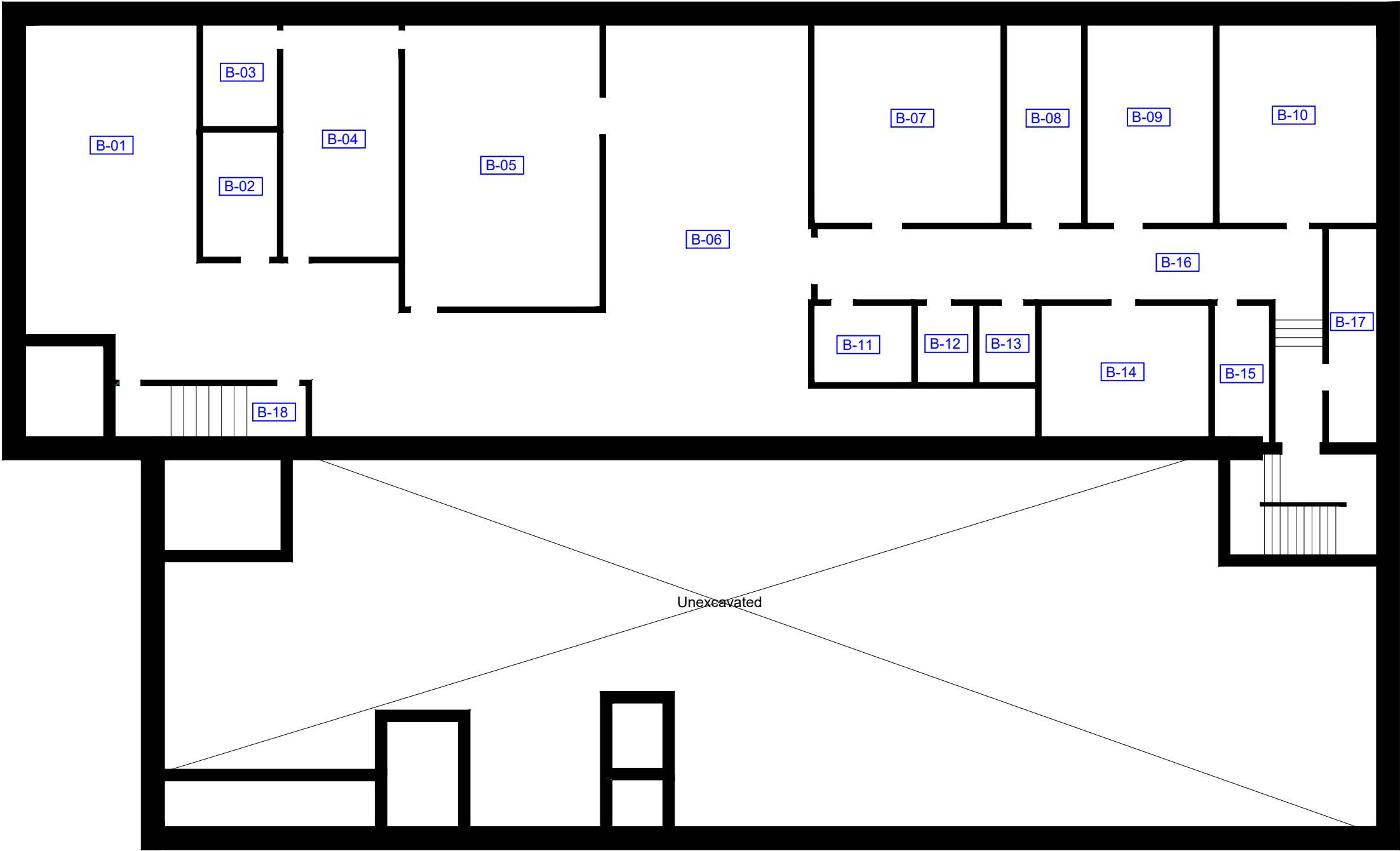
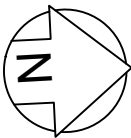
Appendix III – Drawings

LEGEND

 Location Number

 Assumed/Confirmed
ACM

Note: Mastic associated
with flooring is
suspected to be
asbestos-containing.



1) THIS FLOOR PLAN MUST BE READ IN CONJUNCTION WITH THE DESIGNATED SUBSTANCE AND HAZARDOUS MATERIALS ASSESSMENT REPORT.
2) NOT ALL ASBESTOS-CONTAINING MATERIALS ARE INDICATED IN THE FLOOR PLAN. REFER TO THE DESIGNATED SUBSTANCE AND HAZARDOUS MATERIALS REPORT FOR FURTHER DETAILS.
3) REMOVAL OR DISTURBANCE OF ASBESTOS-CONTAINING BUILDING MATERIALS MUST BE CONDUCTED IN ACCORDANCE WITH ONTARIO REGULATION 278/05 "DESIGNATED SUBSTANCE-ASBESTOS ON CONSTRUCTION PROJECTS AND IN BUILDINGS AND REPAIR OPERATIONS".

BASEMENT

CoT SHELTERS - 2025 ANNUAL
REASSESSMENTS

60 BRANT STREET

DRAWING NO.

DS-1

DATE: OCTOBER 2025

SAFETECH PROJECT NO.
1-3250872



3045 SOUTHCREEK ROAD, UNIT 14
MISSISSAUGA, ONTARIO
L4X 2X7

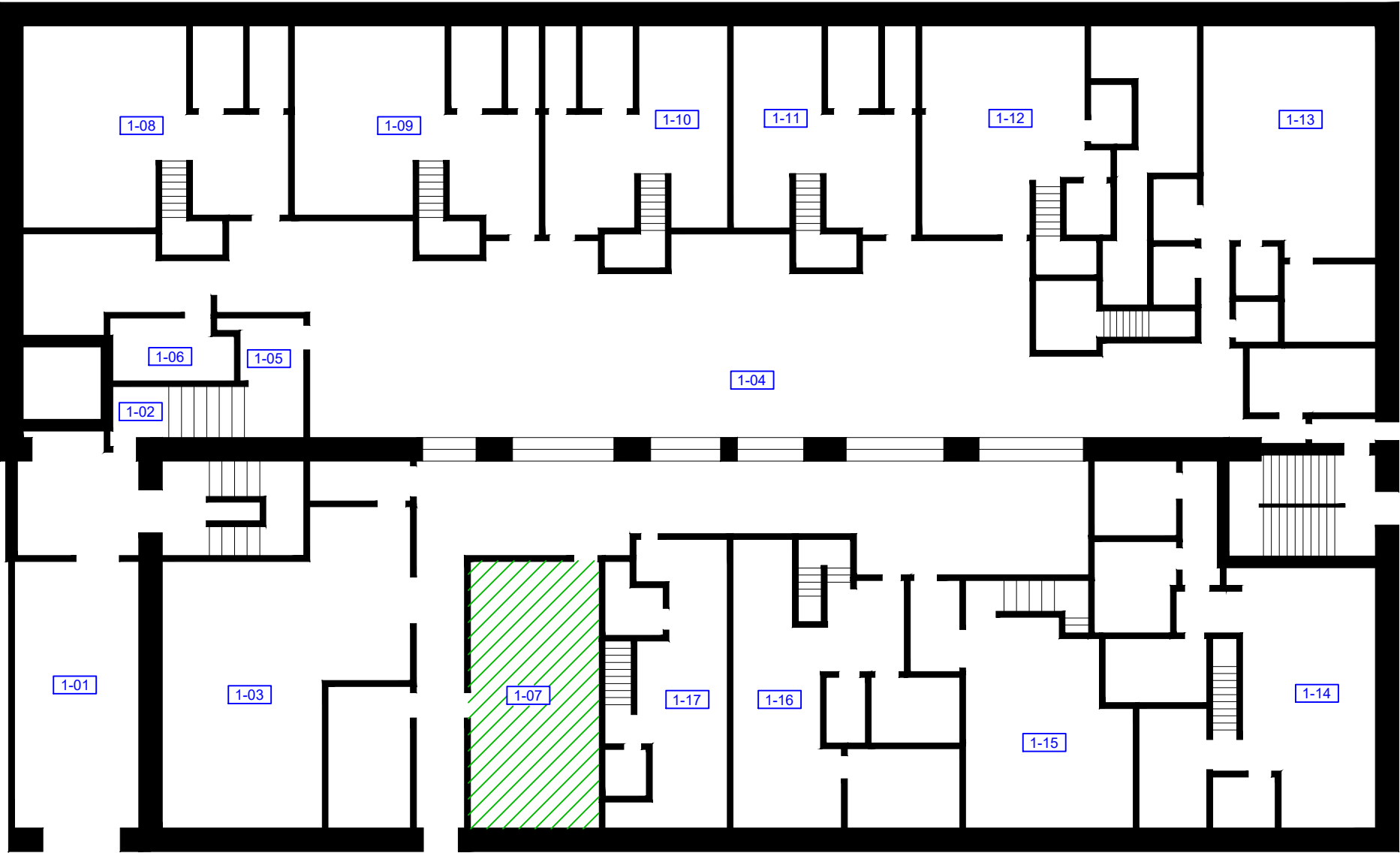
LEGEND

Ⓢ-09 Location Number

Assumed/Confirmed
ACM

NAR No Access to
Room

Note: Mastic associated
with flooring is
suspected to be
asbestos-containing.



1) THIS FLOOR PLAN MUST BE READ IN CONJUNCTION WITH THE DESIGNATED SUBSTANCE AND HAZARDOUS MATERIALS ASSESSMENT REPORT.
2) NOT ALL ASBESTOS-CONTAINING MATERIALS ARE INDICATED IN THE FLOOR PLAN. REFER TO THE DESIGNATED SUBSTANCE AND HAZARDOUS MATERIALS REPORT FOR FURTHER DETAILS.
3) REMOVAL OR DISTURBANCE OF ASBESTOS-CONTAINING BUILDING MATERIALS MUST BE CONDUCTED IN ACCORDANCE WITH ONTARIO REGULATION 278/05 "DESIGNATED SUBSTANCE-ASBESTOS ON CONSTRUCTION PROJECTS AND IN BUILDINGS AND REPAIR OPERATIONS".

1ST FLOOR

CoT SHELTERS - 2025 ANNUAL
REASSESSMENTS

60 BRANT STREET

DRAWING NO.

DS-2

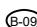


DATE: OCTOBER 2025

SAFETECH PROJECT NO.
1-3250872

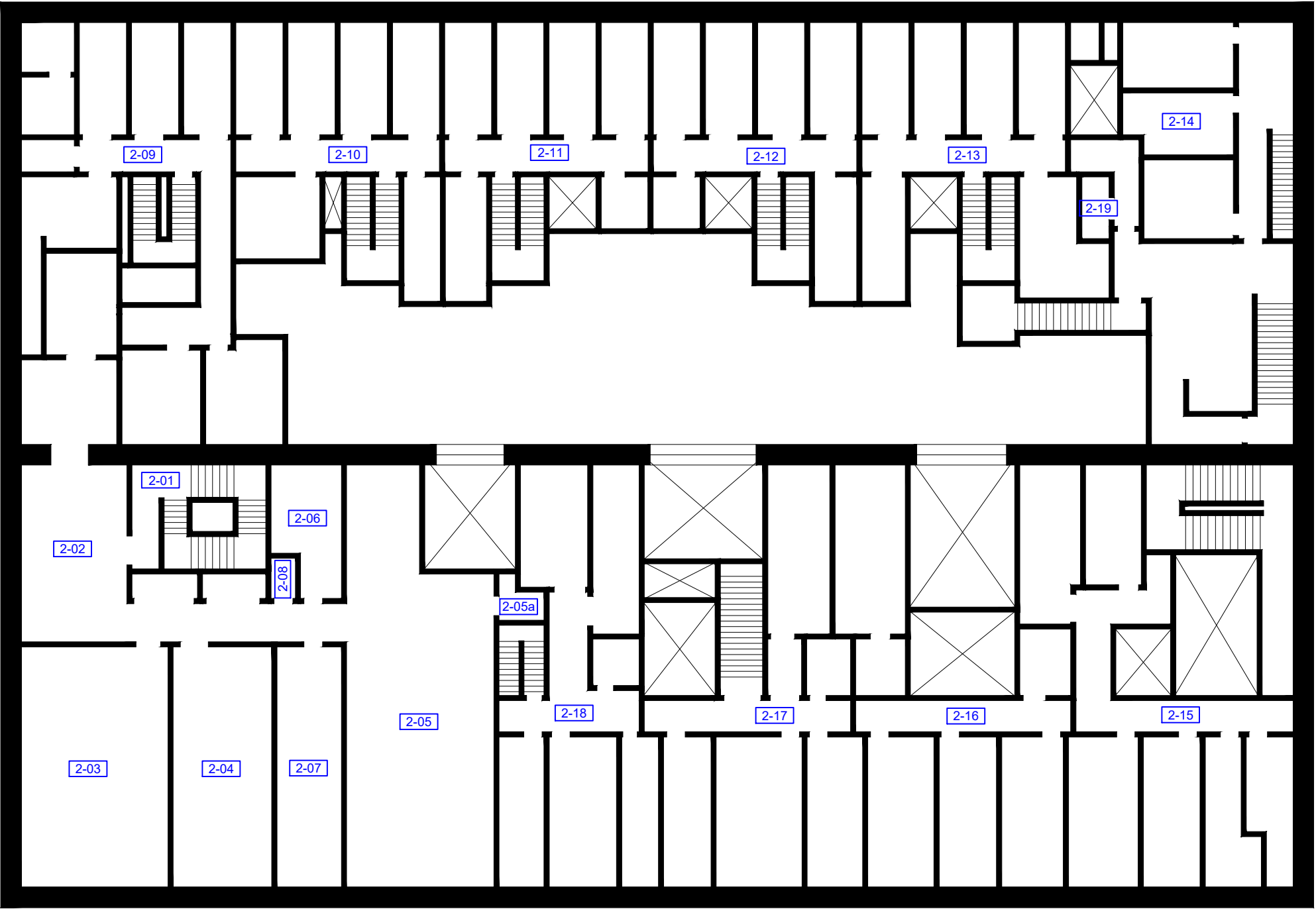


3045 SOUTHCREEK ROAD, UNIT 14
MISSISSAUGA, ONTARIO
L4X 2X7

LEGEND

-  Location Number
-  Assumed/Confirmed ACM
-  No Access to Room

Note: Mastic associated with flooring is suspected to be asbestos-containing.



1) THIS FLOOR PLAN MUST BE READ IN CONJUNCTION WITH THE DESIGNATED SUBSTANCE AND HAZARDOUS MATERIALS ASSESSMENT REPORT.
2) NOT ALL ASBESTOS-CONTAINING MATERIALS ARE INDICATED IN THE FLOOR PLAN. REFER TO THE DESIGNATED SUBSTANCE AND HAZARDOUS MATERIALS REPORT FOR FURTHER DETAILS.
3) REMOVAL OR DISTURBANCE OF ASBESTOS-CONTAINING BUILDING MATERIALS MUST BE CONDUCTED IN ACCORDANCE WITH ONTARIO REGULATION 278/05 "DESIGNATED SUBSTANCE-ASBESTOS ON CONSTRUCTION PROJECTS AND IN BUILDINGS AND REPAIR OPERATIONS".

2ND FLOOR	DRAWING NO.
CoT SHELTERS - 2025 ANNUAL REASSESSMENTS	DS-3
60 BRANT STREET	DATE: OCTOBER 2025
	SAFETECH PROJECT NO. 1-3250872



safetech
ENVIRONMENTAL LTD.

3045 SOUTHCREEK ROAD, UNIT 14
MISSISSAUGA, ONTARIO
L4X 2X7

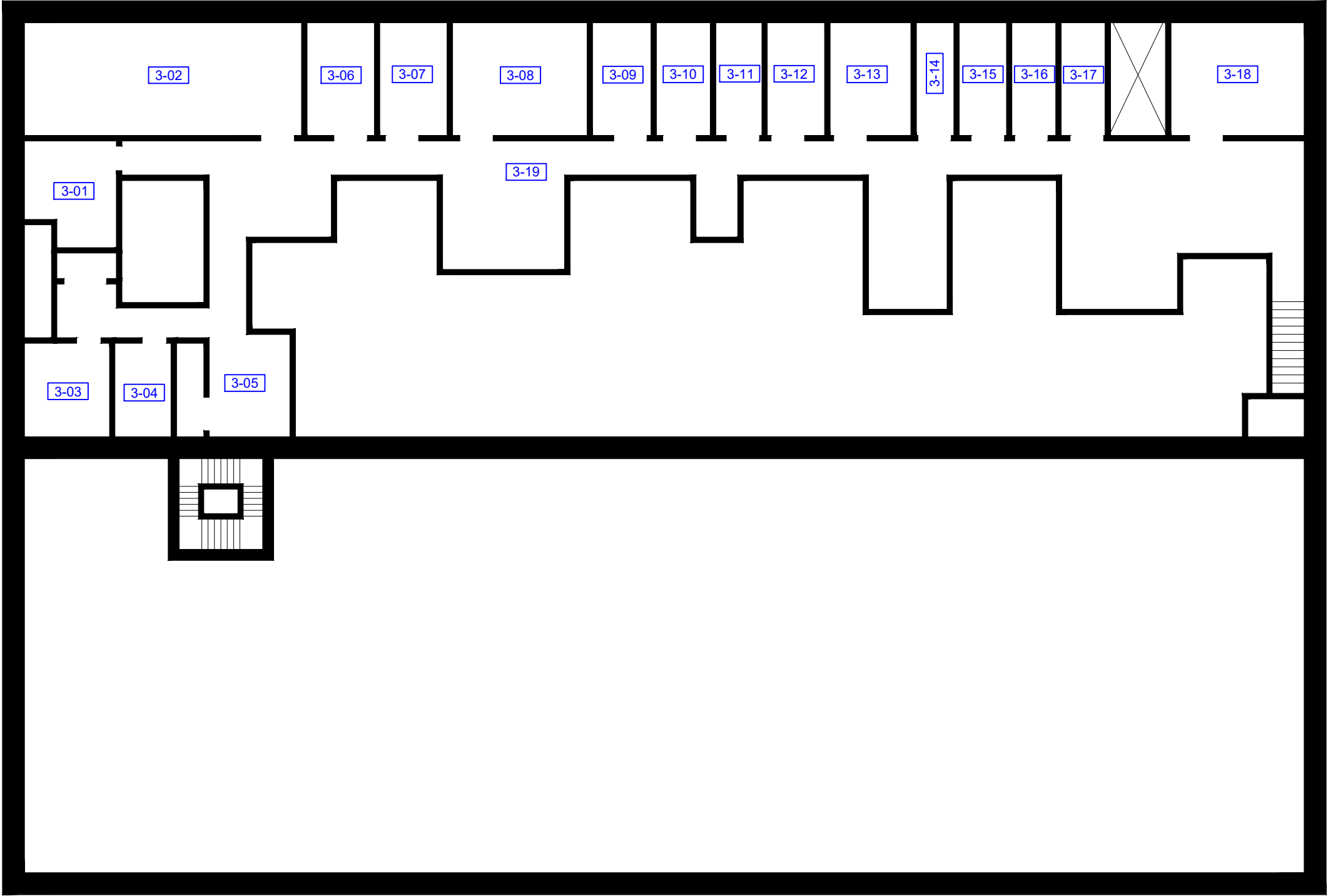
LEGEND

Ⓢ-09 Location Number

Assumed/Confirmed
ACM

NAR No Access to
Room

Note: Mastic associated
with flooring is
suspected to be
asbestos-containing.



1) THIS FLOOR PLAN MUST BE READ IN CONJUNCTION WITH THE DESIGNATED SUBSTANCE AND HAZARDOUS MATERIALS ASSESSMENT REPORT.
2) NOT ALL ASBESTOS-CONTAINING MATERIALS ARE INDICATED IN THE FLOOR PLAN. REFER TO THE DESIGNATED SUBSTANCE AND HAZARDOUS MATERIALS REPORT FOR FURTHER DETAILS.
3) REMOVAL OR DISTURBANCE OF ASBESTOS-CONTAINING BUILDING MATERIALS MUST BE CONDUCTED IN ACCORDANCE WITH ONTARIO REGULATION 278/05 "DESIGNATED SUBSTANCE-ASBESTOS ON CONSTRUCTION PROJECTS AND IN BUILDINGS AND REPAIR OPERATIONS".

3RD FLOOR

CoT SHELTERS - 2025 ANNUAL
REASSESSMENTS

60 BRANT STREET

DRAWING NO.

DS-4

DATE: OCTOBER 2025

SAFETECH PROJECT NO.
1-3250872



3045 SOUTHCREEK ROAD, UNIT 14
MISSISSAUGA, ONTARIO
L4X 2X7

Appendix IV – Site Photographs



Photograph I

View of suspect vinyl sheet flooring identified in the Kitchen (1-07) suspected to contain asbestos content.

Appendix V – Corrective Actions Inspection Report

(No Information to Report)